



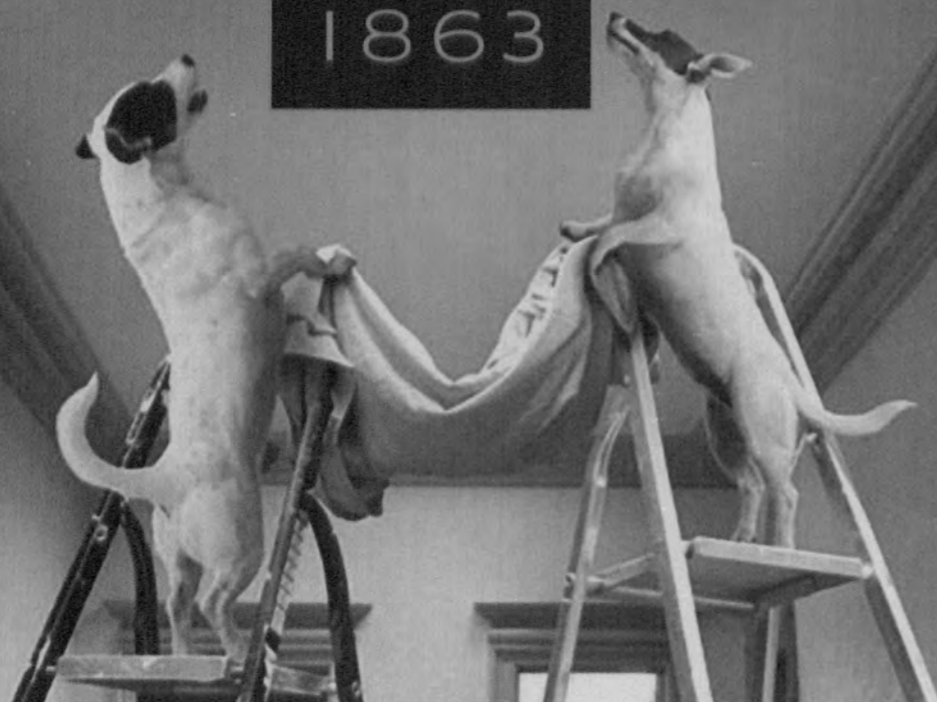
RBA

The Royal Society of British Artists

Annual Exhibition 2011



ARTS  
CLUB  
1863



# UNDER REFURBISHMENT

RE-OPENING JUNE 2011

40 DOVER STREET  
MAYFAIR  
LONDON W1S 4NP

T: 020 7499 8581 W: THEARTSCLUB.CO.UK  
E: SECRETARY@THEARTSCLUB.CO.UK



# RBA

The Royal Society of British Artists

## Annual Exhibition 2011

Wednesday March 2<sup>nd</sup> – Saturday March 12<sup>th</sup>

Open daily 10am – 5pm

(Exhibition closes at 1pm on last day).

### During the Exhibition

**Thursday March 3<sup>rd</sup> 11.30am–1.30pm**

Lino Cut Demonstration

Mick Davies RBA and Trevor Frankland RBA PPRWS RE Hon. RI

**Friday March 4<sup>th</sup> 11.30am–1.30pm**

Keeping a Sketch Book

Nick Tidnam RBA and Alfred Daniels RBA RWS

**Sunday March 6<sup>th</sup> 11.30am–1.30pm**

Portrait Demonstration

David Miller RBA

**Monday March 7<sup>th</sup> 11.30am–2.30pm**

Portrait Demonstration

James Horton PRBA

**Monday March 7<sup>th</sup> 3.30pm–5pm**

President's Tour

James Horton PRBA

**Tuesday March 8<sup>th</sup> 11.30am–1.30pm**

Still Life Demonstration

Barbara Richardson RBA and Christopher Hall RBA RCA

**Wednesday March 9<sup>th</sup> 11.30am–1.30pm**

Landscape Demonstration

Tessa Spencer Pryse RBA

**Thursday March 10<sup>th</sup> 11.30am –1.30pm**

Acrylics Demonstration

Nick Tidnam RBA and Alfred Daniels RBA RWS



#### OFFICERS

President:	James Horton PRBA
Vice President:	Guy Portelli VPRBA, FRBS
Hon. Secretary:	Judith Gardner RBA, NEAC
Hon. Treasurer:	Colin Gardner FRBA
Membership Secretary:	Nick Tidnam RBA

#### OTHER COUNCIL MEMBERS

Martin Leman RBA  
Barbara Richardson RBA  
Dorothy Southern RBA

#### NON VOTING CO-OPTED MEMBERS

Rowan Crew RBA  
Mick Davies RBA  
Peter Kelly Sen. RBA, NEAC  
Chris Myers RBA, RI

#### NON COUNCIL APPOINTMENTS

**Directors & Custodian Trustees:** James Horton PRBA  
Alfred Daniels RBA, RWS  
Trevor Frankland RBA  
PPRWS RE, Hon. RI

**Charity Trustees:** Cav. Romeo Di Girolamo  
PPRBA  
Christopher Hall RBA  
Carole Hubble RBA

**Keeper:** Alfred Daniels RBA, RWS

**Keeper Designate:** Julian Halsby RBA

**Website Keeper:** Roger Austin

#### SELECTION AND HANGING COMMITTEE

The President, Officers  
and Council

The President and Council of the RBA wish to offer our grateful thanks to all our sponsors for the following awards and contributions:

- The A&K Wilson Gallery Award
- The Artist Magazine Award
- The Arts Club Award
- The Davison Award
- The de László Medal
- The Dover Federation for the Arts Award
- The Edward Wesson Award
- The Frinton Frames Award
- The Gordon Hulson Memorial Prize
- The Keeper's Choice
- The Marianne von Werther Memorial Award
- The NADFAS London Area Sculpture Award
- The Red Rag Gallery Award
- The St Cuthbert's Mill Award
- The Winsor & Newton Painting Award
- The Geoffrey Vivis Memorial Award

## Welcome to our 294<sup>th</sup> Annual Exhibition

As always, we strive at the RBA to maintain the highest standards when mounting our annual show. This year we are showing more works by members who have responded in a most wonderful and positive way by sending us the very best of their recent work.

By having at our disposal all three galleries here at the Mall, we are not only able to do justice to the wide range of work produced by members, which of course includes sculpture, but in addition we are able to embrace a number of larger works to increase the variety within the show.

Particularly gratifying this year was the huge increase in response to the send in from non-members. To see so many enthusiastic and competent artists submitting their work for our exhibition is not only uplifting, but a sure sign that painting, printmaking and sculpture are still forming the backbone of our cultural activities in this country. Sadly, of course, we cannot hang everything, but hopefully unsuccessful applicants will try again in an endeavour to be part of a great exhibition.

For some time now, the education programme at the RBA has been working to promote the work of younger artists and for the first time we are able to include in the exhibition a number of works from students from the Astor College and NADFAS. This will embrace schools and colleges, at A level standard, right across the United Kingdom and in recognition of their achievement in being selected for the RBA annual show, these gifted young students will be given the title of 'RBA Scholars'.

This is a particularly exciting development within the RBA which I am confident will go from strength to strength over the years and is something that we, as a society, are deeply committed to in an effort to encourage and promote future generations of artists.

This year's exhibition at the RBA promises to be one of the strongest for a long time. For me, personally, I would like to strengthen wherever possible the intrinsic link to the viewing public who both love to look at and would like to own works of art. Not to mention those who just love looking at good painting and sculpture and go away inspired to have a go themselves.

I sincerely hope that everyone who visits our exhibition will go away with the inescapable feeling that good quality art is thriving and that the future looks bright.

James Horton  
President of the RBA



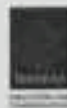
### NADFAS 'RBA Scholars'

The activities of NADFAS, and their long association with all aspects of furthering education in the arts, should be well known to most people. Over a period of years I have been working closely with Pat Owens in awarding prizes to the best of A level students in Cambridge and the East Anglian area.

Largely thanks to Pat and her tireless devotion to encouraging young artists, we have been able to extend the identification of promising young talent to a national level, in respect of showing the best of the regions, here at the RBA.

**Jelly Green** RBA Scholar  
*Reclining Nude* oil on canvas  
Thrusis Mill High School,  
Framlingham, East Suffolk DFAS

**Claudia Strange** RBA Scholar  
*Passion & Obsession* oil on canvas  
St Mary's School, Cambridge,  
Greta DFAS



### Astor College 'RBA Scholars'

For some years now we have had the very great privilege to work with Chris Russell from the Astor College and benefit not only from his generous sponsorship but everything that the association has meant to the promotion of young artists.

This year, for the first time we are able to show as part of the annual exhibition, a selection of the most gifted young artists from the Astor College and NADFAS and give them the title 'RBA Scholar'.

To encourage these young students is not only a wonderful boost to their prospective career but it is a vital part of a drive, on our part, to introduce them to a professional exhibition where they can be taken seriously as equals.



**Lewis Hazelwood-Homer**  
*Sunrise on Pylos*



**Rebecca Redman**  
*The Rising Path*, Upton

### Rome Scholarship

Our commitment to helping young artists can have no better outlet than our Rome Scholarship. This is a highly prestigious award, which enables a young artist to reside at the British School in Rome, for a month, and be able to soak up everything that this ancient city has to offer as defined through their work.

**Jemma Appleby**  
*Jubilee 62* 85 x 85 cms  
charcoal on paper



 **RBA**  
The Royal Society of British Artists

Annual Exhibition 2011

# Hanging List

			£	
<b>CHRISTOPHER AGGS</b>	1	Wedding shoes	Oil	750
	2	Aluminium chair	Oil	600
<b>MALCOLM ASHMAN</b> RBA, ROI	3	Hillside blue	Oil	1,600
	4	Tadwick Valley, Bath	Oil	1,600
<b>DAVID BACHMANN</b>	5	The river at Richmond	Oil	1,200
<b>MARTINE BALDWIN</b>	6	Estuary wall, edition of 5 (4 available) Unframed	Woodcut	445
	7	Whale Wharf, edition of 5 (4 available) Unframed	Woodcut	365
<b>MARTYN BALDWIN</b> RBA	8	Cat in the sun	Oil	4,500
	9	Cat, chair, table	Oil	3,300
	10	Tractor, Chateau Dalmeran	Oil	3,500
	11	Dahlia	Oil	1,200
	12	From the terrace	Charcoal	400
<b>SUKHI BARBER</b>	13	Seed syllable series OM AH HUM edition of 5 (5 available)	Bronze	9,200
	14	Potential II, edition of 9 (9 available)	Bronze & gold	3,850
<b>JEREMY BARLOW</b> ROI	15	Marrakech	Oil	2,100
<b>PAUL BARTLETT</b> Sen. RBA, RBSA	16	The astronomer	Pastel & charcoal	950
<b>FRED BECKETT</b> Hon. RBA RSMA, FROI, Hon. RI	17	Artimino, Tuscany	Oil	2,750
	18	Waiting ferry, Isola Bella	Oil	1,850
<b>MICHAEL BENNALLACK HART</b>	19	Cloud at Knole	Oil	2,750
<b>VARSHA BHATIA</b>	20	The Great Hall, Lincoln's Inn	Watercolour	2,000
<b>AKASH BHATT</b> RBA, RWS	21	Cienfuegos I	Ink	700
	22	Santiago de Cuba V	Ink	650
	23	Somerset House I	Ink	700
<b>CINZIA BONADA</b> RBA	24	Ashley	Oil	650
	25	Approaching storm, L'Etacq Jersey C.I.	Oil	790
	26	Fay Rose	Charcoal	500
	27	2, Cambridge Park	Oil	790
	28	Just mimosa	Oil	650
	29	Café staff frolicking in the snow, beneath Richmond Bridge	Oil	850
<b>SUSAN BOWER</b> RBA, ROI	30	Naughty dogs	Oil	1,800
	31	All singing & all dancing	Oil	1,800
	32	Lets hear it for the girls	Oil	1,800
	33	The pumpkin seller's wife	Oil	1,800
	34	Coats to match	Oil	1,800
	35	Swim & Gym	Oil	1,800
<b>DAVID BRAMMELD</b>	36	The alleyway	Acrylic	795
	37	Derelict backs II	Acrylic	795
	38	Broken town II	Acrylic	795

			£	
<b>PETER VAN BREDA</b>	39	First light, Lymington Harbour	Oil	650
	40	Castellina in Chianti	Oil	750
<b>HARRY BRIOCHE</b>	41	All summer long	Oil	660
<b>MICHEL BROUSSEAU</b>	42	Sail II	Oil	4,000
	43	Sail III	Oil	4,000
<b>STEPHEN BROWN</b> RBA	44	Devon lanes	Oil	965
	45	Sun after rain	Oil	1,450
<b>RAYMOND CAMPBELL</b>	46	Tea cake	Oil	300
<b>SUE CAMPION</b> RBA	47	Almond blossom near Granada	Pastel	1,850
	48	Long shadows	Pastel	750
	49	Bridlington boat	Pastel	990
	50	Winter Shropshire	Pastel	750
	51	Still life in white	Oil	1,000
<b>COYAN CARDENAS</b>	51	Still life in white	Oil	1,000
<b>JUNE CRISFIELD CHAPMAN</b>	52	The lovers	Charcoal & chalk	1,200
<b>GEOFFREY CHATTEN</b> RBA	53	The Island marsh	Oil	2,350
	54	Ox eye daisies	Oil	1,200
	55	On Goreston Beach	Oil	1,400
	56	Norwich from the Heath	Oil	1,800
	57	Banhams horse's acre I	Oil	475
	58	Banhams horse's acre II	Oil	475
<b>NICHOLAS CHEESEMAN</b>	59	Broken palettes	Stitched fabric	600
<b>TOM COATES</b> PPS, PPRBA, RP, RWS, PPNEAC	60	Mary painting in Italy	Oil	4,000
<b>AUSTIN COLE</b>	61	Blustery day, Stackpole Head, edition of 20 (6 available) Unframed	Etching	220
	62	T5 is working, edition of 30 (10 available) Unframed	Etching	185
	63	View from Oxo Tower, edition of 20 (5 available) Unframed	Etching	230
	64	View of London from Oxo Restaurant, edition of 25 (10 available) Unframed	Etching	195
	65	Gracechurch Street	Etching	320
	66	View of London from Oxo Restaurant, edition of 25 (10 available) Unframed	Etching	280
<b>ROY CONNELLY</b>	65	Gracechurch Street	Oil	550
<b>ROWAN CREW</b> RBA	66	Fish stall, Borough Market	Oil	850
	67	Harbour day, Whitstable	Oil	850
	68	High water, Rye Wharf	Oil	850
	69	Pin Mill, Suffolk	Oil	1,250
	70	Putney Bridge	Oil	850
	71	View from Rotherhithe	Oil	850

			£	
IAN CRYER (IPRO)	72	Afternoon arrival, Penzance	Oil	1,150
CHERYL CULVER (NSA, PS)	73	Elegant Birches at the edge of the forest	Pastel	1,100
	74	The path finds its way across the moors	Pastel	1,200
	75	They stand together in isolation	Pastel	850
	76	To every tree a special place	Pastel	950
	77	Little pointed hill with conifers	Pastel	575
	78	Wandering hedge	Pastel	590
WILL CUTTS	79	Aymerton field	Oil	850
ALFRED DANIELS (RBA, RWS)	80	Flirty in Brighton	Acrylic	1,950
	81	Red deer, Dalatinnia	Acrylic	1,350
	82	Tourists at Baelbar	Acrylic	5,000
	83	Morris dancers of Oxford	Acrylic	1,950
DEREK DANIELLS	84	Winter aloftments	Oil	900
W R DANNHEIMER	85	Lobster pots on Chest Beach	Watercolour	650
	86	Blocks # 2	Pen & ink	550
	87	Blocks # 3	Pen & ink	550
STEPHEN DARBISHIRE (RBA)	88	Daffodils on the window sill	Oil	875
	89	Celandines	Oil	850
	90	Enchanted evening	Oil	925
MICK DAVIES (RBA)	91	Howlin' the heavin' (Slightly blues, edition of 100 (99 available)) Unframed	Etching	250 180
	92	The appalling mauling of Major Spauling	Acrylic	880
	93	The Gurners first league game at the Emirates, Aug 2006, (edition of 100 (80 available)) Unframed	Etching	400 300
	94	In the lion's den	Oil	850
	95	Samson and Delilah	Oil	850
	96	Untitled, edition of 8 (8 available) Unframed	Reduction linocut	450 300
CHRIS DAYNES	97	Landscape under snow	Oil	350
BILL DEAN (CI)	98	The conductor	Oil	500
	99	Replacing the blue	Oil	580
ROGER DELLAR (RGL, RL, PS)	100	Live chefs	Oil	600
GEORGE DEVLIN (RSK, RGL, RBA, RCL, RWS, FRSA)	101	Mare at Tiffin	Oil	5,400
	102	Summer breeze, Fife	Oil	5,400
	103	Towards Punta della Dogana	Pastel	1,150
	104	Tramonto, Bacino San Marco	Pastel	1,150
LUCY DUKE	105	Three Musketeers	Watercolour	600
PATRICK FARRELL (CI, RBA)	106	August garden	Oil	800



An Exhibition of New Paintings by

# Nicholas Verrall

31st March – 17th April 2011

Private View Thursday 31st March 6 – 9pm

Catalogue of work available upon request

## CATTO GALLERY

100 Heath Street • Hampstead • London NW3 1DP • Tel: +44 (0)20 7435 6660 • www.catto.co.uk • art@catto.co.uk

Opening times: 10am - 6pm Mon - Sat - 12.30pm - 6pm Sunday - and by appointment

				£
MADELINE FENTON	107	My kitchen chair	Oil	825
	108	Arctocrat	Tempera	625
	109	Old fashioned looser	Oil	725
NANCY FLETCHER	110	The portrait painter	Oil	6,000
JANE FORD	111	Parti d'Estete (Parti of Summer)	Oil	395
TREVOR FRANKLAND RBA, HYAMS, RE, Hon. FR	112	Hotel early morning	Watercolour & conte	820
	113	The mysterious space of morning light #2	Watercolour & conte	820
	114	Revealing the view	Watercolour & conte	900
	115	Drawing for Time behind glass at Kew	Watercolour pencil	320
MALCOLM FRANKLIN	116	Insomnia, edition of 6 (5 available)	Bronze	2,200
HILARY FREW RBA, FRBS	117	Set fair Bronze edition available, edition of 8	Portland stone	3,800 POA
	118	Tying the knot, edition of 9 (3 available) Editions	Bronze	7,800 POA
	119	The neighbours, edition of 2 (2 available) Editions	Bronze	3,600 POA
	120	Whisper, edition of 9 (3 available) Editions	Bronze	5,500 POA
JEREMY GALTON RBA	121	Cley beach	Oil	2,400
	122	Camden twilight	Oil	1,200
	123	Michawmas daisies	Oil	975
	124	Norfolk landscape	Oil	975
	125	Silver teapot	Oil	975
	126	Two copper pots	Oil	975
TIM GALTON	127	Holkham sands	Oil	1,600
JUDITH GARDNER RBA, NEAC	128	Winter landscape, rough ground	Oil	1,700
	129	Evening sky	Oil	800
	130	Winter light setting sun	Oil	700
	131	Landscape pink light	Oil	650
	132	Setting sun	Oil	650
	133	Poppies & daisies, turquoise light	Oil	750
BRIAN GEORGE RBA, ARCA	134	Orford Ness	Oil	1,250
	135	Bremen harbour	Oil	1,450
	136	Cold war relic	Oil	480
LOUISE GIBLIN ARBS	137	Fighting time, edition of 12 (1 available)	Translucent resin	3,260
	138	Perfect fit, edition of 12 (1 available)	Bronze resin	3,200
MICHAEL GREY-JONES RBA	139	Fist	Oil	1,950
CAROLE GRIFFIN	140	Gold reflected	Oil	750
	141	Reflected bowl	Oil	650
CAROLINE GRIFFIN	142	Summer still life	Oil	550

Studio 43, Barleylands Craft Village  
Barleylands Road  
Billericay, Essex  
CM11 2UD

Tel: 01268 288445  
info@newart-gallery.co.uk  
www.newart-gallery.co.uk

**NEWART**  
GALLERY



An eclectic collection of painters in oils, watercolours, pastels and glass. Photographers, sculptures, giclee prints, etchings and limited edition prints. Restoration and cleaning. Framing. Corporate placing of artwork. Vintage film posters.

Top: Anthony Ellis, Sara Sherwood, Peter Kelly (RBA NEAC).  
Bottom: Gina Southgate, Peter Hanson, Rosie Emerson, Terry Frost (Sir).

			£	
JENNY GUNNING	143	Looking through the wing mirror Free Bridge New York, edition of 15 (15 available)	Etching Unframed	420 300
	144	George Washington Bridge, New York New York, edition of 15 (15 available)	Etching Unframed	420 300
CHRISTOPHER HALL RBA, RCA	145	Sainta di Crescenzi, Roma	Oil	1,050
	146	Hillside, Arcol	Oil	850
	147	Rinyd Dhu	Oil	780
	148	Deal Street, Spitalfields	Oil	720
	149	Derby	Oil	600
	150	Montreal	Oil	650
MIRANDA HALSBY RBA	151	In Regent's Park, edition of 50 (45 available)	Etching & aquatint Unframed	300 240
	152	Hope, edition of 50 (50 available)	Etching & aquatint Unframed	300 240
	153	La Plage Vers Agde, edition of 50 (50 available)	Etching & aquatint Unframed	275 200
	154	Advent of winter, edition of 50 (50 available)	Etching, aquatint & watercolour Unframed	300 240
	155	Waiting for spring	Oil	395
	156	Christmas cyclamen	Watercolour	375
JULIAN HALSBY RBA	157	Chateau de Dio, morning light	Oil	400
	158	Snow near Cerve Abbas	Oil	400
	159	Sherborne Abbey, December 2010	Oil	400
	160	St. Eulalie de Sarnon	Oil	375
	161	Towers in the mist	Oil	375
	162	Evening vaporetto, Venice	Oil	375
CHARLES HARDAKER RBA, NEAC	163	Open doors with blackbird	Oil	875
	164	Allegory	Oil	1,150
	165	Threshold	Oil	2,000
	166	Open doors, with flowers	Oil	1,875
	167	Through to the light	Oil	1,875
	168	Open doors, morning	Oil	2,500
LAURA HARDY RBA	169	Paradise lost	Oil	2,000
	170	Pears on tissue paper	Watercolour	750
	171	Still life with rocks & shells	Oil	3,000
BARRY JOHN HARRISON	172	Time and the trees	Pencil	2,500
	173	Introspection	Pencil	2,500
JUSTIN HAWKES	174	Siding	Watercolour	370
ANN HEAT RBA	175	Cinderella	Oil	640
	176	Rose hips	Oil	640
	177	Calves in the mist	Oil	560
	178	Sprouts with blue glass	Oil	560
	179	Red pot	Oil	480
	180	Two sprouts	Oil	480

			£	
JOHN HOAR	181	Satterleigh, Devon	Sepia	1,280
TOM HOAR	182	Putting out the catch, Essaouira	Oil	5,500
JAMES HORTON RBA	183	Tribal dance, Gujarat, India	Oil	8,500
	184	Holy Ghats, Pushkar, India	Oil	1,900
	185	Mud & reflections at low tide, Walsbywick	Oil	2,500
	186	Low tide waterfront houses, Walsbywick	Oil	1,500
	187	Street scene, Bundl, India	Oil	1,150
	188	Late afternoon view across the lake, Udaipur	Oil	750
JOHN HOWARD RBA	189	Woods, Penzance Point, Cornwall, edition of 35 (12 available)	Etching & aquatint Unframed	445 375
	190	Dors at St. Clements Studio	Oil	35,000
PROFESSOR KEN HOWARD OBE RA, Hon. RBA, FFRAC, RWA, RWE, ROL, RSGA	191	Innocent Venice, 2011	Oil	12,000
	192	Lignea Pineta	Oil	3,600
	193	Caro rising	Acrylic	1,250
CAROLE HUBBLE Hon. RBA	194	Round the lighthouse	Acrylic	750
	195	Low goose	Acrylic	850
	196	Early snow	Acrylic	850
	197	The path to Langthwaite	Acrylic	750
	198	Rabbit in waiting	Acrylic	850
	199	A linnet's cage	Oil	550
MARY HYDE	200	The vale of Pewsey	Oil	425
	201	Whole cherries in a light syrup	Oil	625
	202	Dried seed heads	Oil	1,995
NORMA JAMESON RBA, FCI	203	White flowers reflected	Oil	1,995
	204	Outside, inside	Oil	1,995
	205	Moonbow	Oil	350
FRANK JOHNSON	206	Nylands	Oil	350
	207	Sunlight in Rodin's house	Oil	3,500
PETER KELLY Hon. RBA, NEAC	208	The bedroom	Oil	900
	209	Venetian backstreet	Oil	3,000
	210	Bruges at twilight	Oil	2,900
	211	St. Paul's from the South Bank	Oil	1,800
	212	Early morning on the Riva Degli Schiavoni, Venice	Oil	2,300
	213	Bubbles	Oil	2,150
ALAN LAMBIRTH RBA	214	Mary & Senta	Oil	2,150
	215	A girl seated on a chair	Oil	2,150
	216	The red balloon	Oil	2,000
	217	The ventriloquist	Oil	2,000
	218	A woman seated at a table	Oil	2,000
	219	Soaring	Stainless steel	1,600



			£	
JILL LEMAN RWS	220	Tulips in a willow pattern jug	Watercolour	850
	221	White anemones	Acrylic	850
	222	Orchids & weevil	Acrylic	700
MARTIN LEMAN RBA	223	Nesheaven harbour	Oil	1,600
	224	Compôtes des fruit	Oil	1,600
	225	White flowers	Oil	1,500
	226	Misty	Oil	850
	227	On the table	Oil	850
	228	Flowers east	Oil	850
ANNA LEVER RBA	229	Dreamers	Ceramic stoneware	275
ARTHUR LOCKWOOD RBA, RWS, RISA	230	Scrap metal re-cycling plant	Watercolour	1,200
	231	Coventry colliery	Watercolour	1,700
	232	Ripe for development	Watercolour	950
	233	Diversion	Watercolour	850
	234	Drop hammer	Watercolour	950
	235	Black country forge	Watercolour	1,050
GILLIAN LOCKWOOD RISA	238	Dunan	Ceramic	450
	237	Pod with seeds	Ceramic	350
ELISE LYNCH	238	Evening in the Luben	Oil	350
	239	Somerset fields	Oil	350
ANDREW MACARA RBA, NEAC	240	Two trees, Altestree, 2009	Oil	6,750
	241	Spring, Verbier	Oil	4,000
RONALD MADDOX FR, Hon. RWS, Hon. RBA, Hon. PE	242	Harbour, St. Ives, Cornwall	Watercolour	880
JOHN MARTIN RBA	243	On the Grand Canal	Oil	650
	244	San Pantalone, Venice	Oil	2,000
	245	Rye Harbour	Oil	980
	246	August morning, Miranda, Gascony	Oil	1,100
	247	Still life with anemones	Oil	2,000
	248	The china sugar bowl	Oil	2,000
DIANA MATTHEWS	248	Glass & pears	Oil	2,500
DAVID MILLER RBA	250	Costume model	Oil	1,200
	251	Gangway and pontoons, Putney	Oil	1,500
	252	By Marble Hill ferry	Oil	1,500
	253	Life study	Oil	900
BRIDGET MOORE RBA, NEAC de László Prize Winner 2010	254	Dreaming of L.G.	Oil	3,500
	255	Home	Gouache	700
	256	Lala sitting in bed	Gouache	575
	257	The peasant woman	Gouache	700
	258	A girl and her dachshund	Gouache	650
	259	The verandah	Gouache	800
	260	The kiosk	Gouache	700
	261	Swing-boats	Gouache	650
	262	Roll-up	Gouache	700



White Anemone, 25" x 25", oil on paper



Red Spots, 13" x 10", oil on paper



Pink Drawers with paper dish, 22" x 32", oil on paper



Anemone with Applique, 25" x 25", oil on paper

Janet Golphin RWS  
3<sup>rd</sup> – 19<sup>th</sup> March 2011  
Open Tuesday – Saturday 10am – 5.30pm

**RUSSELL GALLERY**

			£	
<b>RONALD MORGAN</b> RBA, RCI	263	Thames footpath, Putney	Oil	1,000
	264	Harbour scene, north Cyprus	Oil	480
	265	The Thames, July afternoon	Oil	480
	266	Place de la Concorde, Paris	Oil	500
	267	The Thames at Richmond	Oil	500
<b>ALISON C. MUSKER</b>	268	Sunlight on the Cypriot mountains	Watercolour & gouache	1,600
<b>CHRIS MYERS</b> RBA, RI	269	Fountain of youth	Watercolour	3,750
	270	It's in him and it got to come out	Watercolour	4,250
	271	Hung parliament	Watercolour & sepi	850
	272	Contemplation	Watercolour	850
	273	Plaza de Maria Luisa, Seville	Watercolour & sepi	950
	274	Object d'art	Watercolour	2,500
<b>CAROLINE McADAM CLARK</b> RBA, ARWS	275	Bec de l'aigle	Oil & pencil	600
	276	Towards Castis	Oil & pencil	600
	277	Lots Road, winter	Oil & pencil	900
	278	Lots Road & vase	Oil & pencil	600
	279	Devilishon	Oil & pencil	600
	280	By the river	Oil & pencil	600
<b>JOHN McCOMBS</b> RBA, RCI, PMAFA	281	Winter Lane, Saddleworth	Oil	2,200
	282	Afternoon sunlight, Delph, winter	Oil	1,500
	283	Moorland Lane, Saddleworth, winter	Oil	1,500
	284	Delph bridge, late summer	Oil	1,750
	285	Reservoir, Saddleworth, winter	Oil	1,500
	288	View towards Delph, Autumn	Oil	1,250
<b>PETER NEWSOME</b> ARS, RBA	287	Kiss	Bonded glass	3,700
	288	Equilibrium, edition of 3 (1 available)	Bonded glass & castite	1,450
	289	Resurgence	Bonded glass	2,200
<b>ALISON NICHOLSON</b>	290	April afternoon barn	Oil	405
<b>TONY NOBLE</b>	291	In these shoes? I don't think so!	Acrylic	4,000
<b>VICKY OLDFIELD</b>	292	Chilies, edition of 20 (18 available)	Collagraph & cine-collé	135
		Unframed		100
	293	Aquilegia, edition of 10 (8 available)	Collagraph & cine-collé	320
	Unframed		250	
<b>STEVEN OUTRAM</b> RBA	294	The lights	Oil	8,750
<b>ALAN W. PALMER</b>	295	Allotments under snow	Acrylic	450
<b>JULIETTE PALMER</b> RBA	296	Kyrenia blue harbour	Watercolour	850
	297	Blue ride to Walswick	Watercolour	650
	298	Southwold harbour, working jetties	Watercolour	600
	299	Starling chorus and Caroline	Watercolour	500
	300	Southwold shed with restored boat	Watercolour	500
	301	Shed with a winch	Watercolour	450
<b>LEIGH PARRY</b> RBA Hon. FS	302	Onlookers Imperial Palace, Beijing China	Watercolour	425

			£	
<b>LYNDA PAYNE</b>	303	Winter's night	Oil	500
	304	Three trees	Oil	400
<b>ROUHI PECK</b>	305	Red tango, edition of 20 (20 available)	Etching	360
		Unframed		300
<b>SUMI PERERA</b> ABE	306	Death of the author, edition of 5 (3 available)	Etched, stitched, embossed, artist book	500
	307	The death of the author II, edition of 3 (2 available)	Etched, stitched, embossed, artist book	500
<b>MELVIN PETERSON</b> (R, NEAC)	308	Walesby Church, Lincolnshire	Watercolour	850
	309	Pyrenees sunrise	Watercolour	575
<b>GUY PORTELLI</b> WRBA, FRBS	310	Sport of kings, edition of 3 (3 available)	Stainless steel	36,000
	311	Ophelia, edition of 7 (6 available)	Bronze mosaic	7,800
	312	Tango, edition of 10 (8 available)	Bronze	6,000
<b>JON PRYKE</b> RBA	313	Dunes at last light	Pastel	950
	314	From Cromer pier	Pastel	850
	315	Cottage, Fogueira, Portugal	Pastel	850
	316	The lake, Manor House Gardens	Pastel	800
	317	Portuguese light	Pastel	800
	318	Suffolk lake at dusk	Pastel	350
<b>TESSA SPENCER PRYSE</b> RBA	319	Wivenhoe Quay, winter	Oil	2,250
	320	Anchor Hill, snow	Oil	800
	321	The hills of Easter Ross	Oil	850
	322	Alma Street	Oil	650
	323	Fishermen	Oil	495
	324	The lane in spring	Oil	425
	325	Island fragments	Oil	2,500
	326	Mercy, edition of 6 (6 available)	Bronze	3,200
<b>BARBARA RICHARDSON</b> RBA	327	Golden lustre	Watercolour	450
	328	Small pots	Watercolour & gouache	450
	329	Five objects & a ribbon	Oil	660
	330	Blue painter's pot	Oil	650
	331	Winter study	Oil	650
	332	Still life with china cat	Oil	650
<b>MICHAEL RICHARDSON</b>	333	Graffiti	Oil	700
	334	Dusk at Dungeness	Oil	680
<b>ROS RIXON</b>	335	The meaning of art	Paper	2,250
	336	Conversation pieces, Impassar	Paper	1,800
	337	Conversation pieces, unanimous	Paper	2,500
<b>JACQUELINE RIZVI</b> RBA, RWS, NEAC	338	Apotheosis of a builder	Mixed media	5,750
	339	Silver sea, West Bay	Watercolour	1,650
	340	West Bay, people & waves	Watercolour	1,650
	341	Still life, rice bowl	Watercolour	1,250
	342	Still life, the brown teapot	Watercolour	975
	343	Blue netting	Oil	350

			£	
STEPHEN ROSE	344	Winter landscape, Kent	Oil	1,800
	345	Patches in a plastic bag	Oil	1,000
DAVID PAUL ROWAN <small>hon. RBA</small>	346	Hindu Temple, Roy Para Hooghly, West Bengal	Acrylic	450
	347	Lost pub in Burnby Road, demolished in the 80's	Pencil	200
DAVID SAWYER <small>RBA</small>	348	Fontana del Fiumi, Rome	Oil	5,500
	349	Saumur across the Loire	Oil	2,800
	350	Santa Maria della Salute, winter sunlight	Oil	2,200
	351	Piazzetta at sunset	Oil	1,950
	352	Silver light on the Grand Canal	Oil	950
	353	Sunrise over the lagoon, Venice	Oil	850
TONY SCRIVENER	354	Fruit on plate	Mixed media	495
	355	Boyanthill Beach	Mixed media	495
	356	Boats off St. Mark	Mixed media	495
	357	Coop milk factory II	Acrylic	425
YASUNOBU SHIDAMI	358	Self portrait	Oil	NFS
SUSAN SHORT	359	Outside the Blind Beggar, edition of 75 (70 available) Unframed	Woodcut	330
				250
LINDA J. SMITH	360	Coastline, Sardinia	Mixed media	750
JULIA SORRELL <small>RE, RBA</small>	361	Detail of a piece of spruce from West Harling Woods	Oil	1,950
	362	Fractured wood as a landscape	Oil	850
	363	Detail of Scottish driftwood	Oil	750
	364	Detail of mangrove wood	Oil	690
	365	Study of Welsh bog oak	Oil	750
	366	Cobwebs of the emine moth caterpillar, May 2010	Oil	750
DOROTHY SOUTHERN <small>RBA</small>	367	Aromatic planting, Kew	Oil	900
	368	Volcanic sky, Kew	Oil	850
	369	Cyprus pink star	Oil	850
	370	Water lilies, Kew	Oil	850
RICHARD SPARE	371	French table, edition of 75 (72 available) Unframed	Drypoint & watercolour	599
				469
JOHN SPRAKES <small>RBA, RCI</small>	372	Aldbrough beach	Acrylic	2,200
	373	Beach huts, Wells-next-the-Sea	Acrylic	2,200
	374	Norfolk fields	Acrylic	425
	375	Reflections	Acrylic	400
	376	Derbyshire evening	Acrylic	400
	377	Hunstanton lighthouse	Acrylic	475
FIANNE STANFORD <small>MA</small>	378	Unstilled II, edition of 10 (9 available) Unframed	Etching	750
				650
CLOVA STUART-HAMILTON	379	Back gardens, Oxford	Pencil	900
DENNIS SYRETT <small>RBA, RPHS, RBA</small>	380	Marguerites & hollyhocks	Oil	3,750

			£	
JACQUELINE TABER	381	Bowl of plums	Oil	600
JUDY TAYLOR	382	Hare on the moon	Mixed media	375
KARL TERRY	383	Sussex trees, Autumn	Oil	875
	384	Winter Wittersham Road Station	Oil	875
	385	Late afternoon, last light, Rye	Oil	875
ANDREW THOMAS	386	Evs, edition of 7 (7 available)	Bronze	4,200
MARGARET THOMAS <small>hon. RBA, NCAC</small>	387	The Mill Race, study	Oil	1,250
	388	Spring basket	Oil	1,500
	389	The wind in the willows	Oil	1,750
	390	Hyacinth	Oil	1,750
CHRISTIAN TIBERTIUS	391	The green and white gentleman	Ceramic	1,000
	392	Wave of mutilation	Ceramic	1,200
NICK TIDNAM <small>RBA</small>	393	Winter, Dungeness	Oil	2,000
	394	First fall	Oil	2,000
	395	Snow forms	Acrylic	1,800
	396	Drawing	Charcoal	450
VIC TREVETT	397	Shelter at last	Oil	850
PATRICIA R. TUCKER	398	Anchors & chains	Watercolour	350
	399	On the deck	Watercolour	350
GEORGE UNDERWOOD	400	The Admiral	Oil	3,000
NEAL VAUGHAN	401	Bournemouth Bay, Boxing Day	Oil	450
NICHOLAS VERRALL <small>RBA, APO</small>	402	The meadow in June	Oil	9,750
	403	Le Pré en Été	Oil	9,750
	404	Snow, Widecombe-in-the-Moor	Oil	9,750
SUE WALES	405	Orange Mountain field	Oil	350
	406	Approaching storm	Oil	700
	407	Trees	Oil	700
EMMA WALKER	408	Cheetah study III, edition of 15 (12 available)	Bronze	770
	409	Cheetah study II, edition of 15 (13 available)	Bronze	770
JACEK WANKOWSKI <small>hon.</small>	410	Red conus, shell spike	Copper & stainless steel	520
TOM WANLESS <small>RBA, RCI</small>	411	African model in the gallery	Watercolour	1,500
	412	Safe haven at South Gars	Watercolour	620
	413	Fields in winter	Oil	1,100
	414	Derrick mill, Norfolk	Oil	1,250
	415	Bird sanctuary, Farns Island	Oil	1,100
	416	Cam on the estuary at low tide	Oil	720
PETER WARDEN <small>RBA</small>	417	Study, the agony in the garden	Pencil	1,200

			£	
OLIVER WARMAN RBA, RCI	418	Silhouette	Oil	498
	419	3 prints, North Italy	Oil	596
VALERIE WARREN RBA, SWS, FSA, Hon. SGRS	420	Marrakech souk IV	Ink	650
	421	Marrakech souk VI	Ink	695
	422	Fest, entry to the souk	Pastel	675
	423	Marrakech, souk et fête	Gouache	650
	424	Marrakech, towards the souk	Gouache	650
425	Viva Italia	Ink	650	
TERRY WATTS RBA	426	Fields in moving light	Acrylic	1,350
	427	Snow at Litterford	Acrylic	1,350
	428	Squall, Weymouth Bay	Acrylic	1,350
	429	Winter sky, Weymouth Bay	Acrylic	1,350
PETER WEAVER RBA, RI	430	Red grid	Mixed media	850
	431	Ghost trap	Mixed media	1,250
	432	The camels are coming	Mixed media	975
BARBARA WEBB	433	Twilight, edition of 30 (18 available) Unframed	Etching	395
	434	Moonlight on the beach, edition of 30 (16 available) Unframed	Etching	295
				295
PETER WILEMAN RCI, ARSAMA, RBSA	435	L'Orangerie	Oil	2,250
ROBERT E. WELLS RBA, RCI	436	Trafalgar Square	Oil	6,600
	437	Leather Lane market	Oil	4,600
ANNIE WILLIAMS RWS, RE	438	Present from Japan, edition of 40 (5 available) Unframed	Etching	160
	439	Winter light edition of 40 (5 available) Unframed	Etching	110
	440	Zig zag II	Watercolour	700
	441	Five pots	Watercolour	700
				700
DAVID WILLIAMS	442	Northumberland borders	Oil	1,600
TOLLECK WINNER	443	Fruit of knowledge, edition of 2 (2 available)	Bronze	1,800
	444	Prophecies	Aluminium & stainless steel	17,500
	445	Forgotten memories	Acrylic	4,500
CLAIRE WILTSHIRE	446	Surface tension	Mixed media	425
	447	Mid afternoon, dusk approaching	Mixed media	425
ANDY WOOD FR, RBA	448	Harbour entrance	Acrylic	800
	449	Port marker	Acrylic	800
	450	Rye Harbour II	Acrylic	650
	451	Channel marker	Acrylic	750
	452	Rye Harbour II	Acrylic	650
	453	Rye Harbour I	Acrylic	650

			£	
ANNE WRIGHT	454	Greek houses	Oil	850
	455	Shadows embold	Oil	850
ANTHONY YATES RBA, RBSA	456	Constitution Hill, Birmingham	Oil	1,350
	457	Terrace backs	Oil	875
EIKO YOSHIMOTO PS, SWS, SPP	458	Alto flautist in black	Pastel	1,300
LINDA ZELIN SWS	459	Figure I	Alabaster	1,100
	460	Figure II	Sapstone	1,950
	461	Figure III	Sapstone	1,060

## The National Student's Art Exhibition RBA Scholars selected by members of the RBA

LYDIA BELL	462	Calm Waters		100
PHILIP EVANS	463	M.U.D. (Mediterranean Urban Decay)		NFS
BETH FELLS	464	Covent Garden		NFS
LAUREN GREENAWAY	465	Granddad		NFS
LEWIS HAZELWOOD-HORNER	466	Sunrise on Pylons		490
	467	Detached		NFS
REBECCA REDMAN	468	The Thinking Path, Upton		NFS
SOPHIE SPREADBURY	469	Circuit		975

## National Association of Decorative &amp; Fine Arts Societies (NADFAS) RBA Scholars

OLIVIA BERESFORD RBA Scholar Farnham DFAS Frensham Heights School, Farnham	470	Untitled I (II)		NFS
JACK BODIMEADE RBA Scholar Newick DFAS Sussex Downs College, Lewes	471	Rhythms & cycles bedroom III		NFS
INDIA BUNCE RBA Scholar Truro DFAS Truro College	472	Mintie		NFS
	473	Self portrait		NFS
EVANGELINE BURRETT RBA Scholar Moor Park DFAS St. Joan of Arc School, Rickmansworth	474	Japanese Chrysanthemum		600
THOMAS CAMERON RBA Scholar Lomond & Argyll DFAS Lomond School, Lomond	475	The floating match		NFS
HANNAH FASHCHING RBA Scholar Granta DFAS Impington Village College, Cambridge	476	Boy in a manhole cover		NFS

<b>JELLY GREEN</b> RBA Scholar East Suffolk DFAS Thomas Mills High School, Framlingham	477	Reclining nude	NFS
<b>TOM HARDING</b> RBA Scholar Harborough DFAS Robert Smyth School, Market Harborough	478	Delicious wicker	NFS
<b>NATALIE HOLT</b> RBA Scholar Sidmouth DFAS Colyton Grammar School, Colyton, Devon	479	Enlightenment	NFS
<b>EMMA HUTCHINSON</b> RBA Scholar Warminster DFAS Kingdown Community School, Warminster	480	Self portrait	NFS
	481	Laurel	NFS
<b>JOSHUA KISSON-GREEN</b> RBA Scholar Amersham DFAS Amersham School, Amersham	482	Me, Josh	NFS
<b>CATHERINE LATHAM</b> RBA Scholar Fylde DFAS King Edward VII & Queen Mary School, Lytham St. Anne	483	Harvested cabbage	NFS
<b>CHLOE NORTHOVER</b> RBA Scholar Truro DFAS Truro College	484	Self portrait	NFS
<b>LUCY PARNELL</b> RBA Scholar Granta DFAS The Leys School, Cambridge	485	Sue # 2	£800
<b>ALEXANDER PAVELEY</b> RBA Scholar Richmond DFAS Richmond Tertiary College, Richmond	486	Watching you I	NFS
<b>ALEXANDRA STEVENS</b> RBA Scholar Stratford upon Avon DFAS Stratford upon Avon Girls' Grammar School	487	Horse's head	£750
<b>ANNA STOLLERY</b> RBA Scholar Ipswich DFAS Northgate High School, Ipswich	488	Lips of a boy	NFS
	489	Portrait of Chris	NFS
<b>CLAUDIA STRANGE</b> RBA Scholar Granta DFAS St. Mary's School, Cambridge	490	Passion & obsession	NFS
<b>FRANCESCA YOUNG</b> RBA Scholar North Lincolnshire DFAS Franklin College, Grimsby	491	Portrait II	NFS

## ARTIST'S GENERAL BENEVOLENT INSTITUTION

Burlington House, Piccadilly,  
London W1J 0BB

Patron: HRH The Prince of Wales  
President: Sir Nicholas Grimshaw KC, CBE, RA

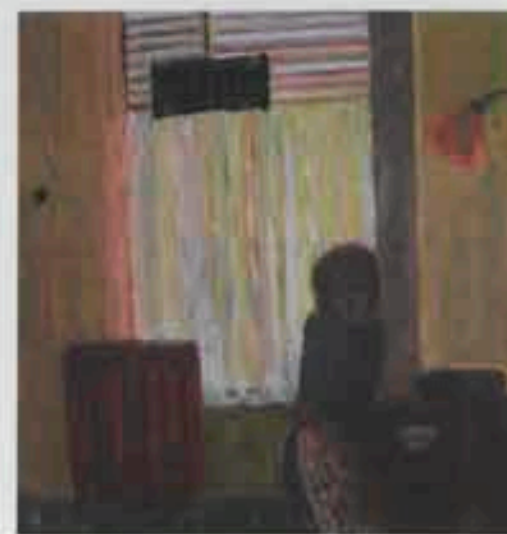
Founded in 1814 by J M W Turner the  
AGBI provides help to professional artists  
and their dependents in times of trouble.

Funds are always needed and donations  
of any amount are gratefully received  
and acknowledged.

*Cheques should be sent to The Secretary at the above address*



This year's exhibition  
will feature works  
by the 2010 winner of  
the de László Medal,  
Bridget Moore RBA NEAC



1. **Bridget Moore** RBA NEAC  
Roll-up 42 x 47 cms gouache
2. **Bridget Moore** RBA NEAC  
Drawing of L.O. 102 x 102 cms oil
3. **Bridget Moore** RBA NEAC  
Portrait Woman 53.5 x 49.5 cms gouache



David Sawyer RBA 'Santa Maria Della Salute Venice Sunlight' 25.5 x 46 cms oil



Ann Heat RBA 'Cindamix' 19.5 x 19 cms oil



Nicholas Verrall RBA ARCA 'The Maelstrom in Ultra' 101 x 128 cms oil



Hilary Frew RBA FRMS 'Whisper' 47 x 33 x 26 cms terrazo



Martyn Baldwin RBA 'Clit Chair Table' 69 x 64 cms oil



Jeremy Galton RBA 'Clandon Twilight' 57 x 47 cms. oil



Arthur Lockwood RBA IWS RBSA 'Rise for development' 61 x 61 cms. watercolour



Peter Newsome RBA ARBS  
'Gas' 74 x 54 x 54 cms. Coloured glass



Anthony Yates RBA RBSA  
'Constitution Hill Birmingham' 65 x 63.5 cms. oil



Rowan Crew RBA 'Harbour day Whistler' 23 x 30.5 cms. oil



**Julia Somell R1 RBA**  
*Detail of a piece of Space*  
from *West Haring Woods*  
76 x 122 cms. oil



**Miranda Halsby RBA**  
*Hope* 20 x 20 cms. etching & aquatint



**Martin Leman RBA**  
*Composé de Fruits* 56 x 66 cms. oil



**Barbara Richardson RBA**  
*Golden Juree* 30 x 50.5 cms. watercolour

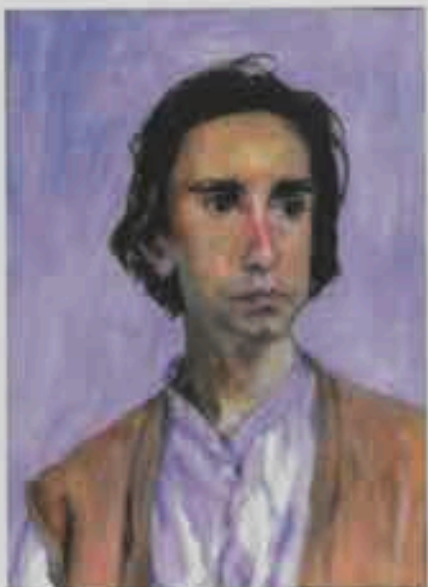


**Jacqueline Fitz RBA RWS NEAC**  
*Still Life Rice Bowl* 42 x 48 cms. watercolour



**Chris Myers RBA R1**  
*Fountain of Youth* 57.5 x 97.5 cms. watercolour





**Cinzia Bonada RBA**  
Ashley 40.5 x 33 cms oil



**Alfred Daniels RBA RWS**  
Finty in Brighton 35.5 x 30.5 cms acrylic



**John McCombs RBA ROI PMAFA**  
Afternoon Sunlight, Deltic, Winter 48.4 x 58 cms oil



**Richard Sorrell RBA PPRWS NEAC**  
Mail 27 x 20 cms acrylic



**Mick Davies RBA**  
The Gunner's First League  
Game at the Emirates  
Aug 2006 83.5 x 61 cms  
hand coloured stitching



**Julian Hahby RBA**  
Snow near Ceme Abbas 36 x 51 cms oil



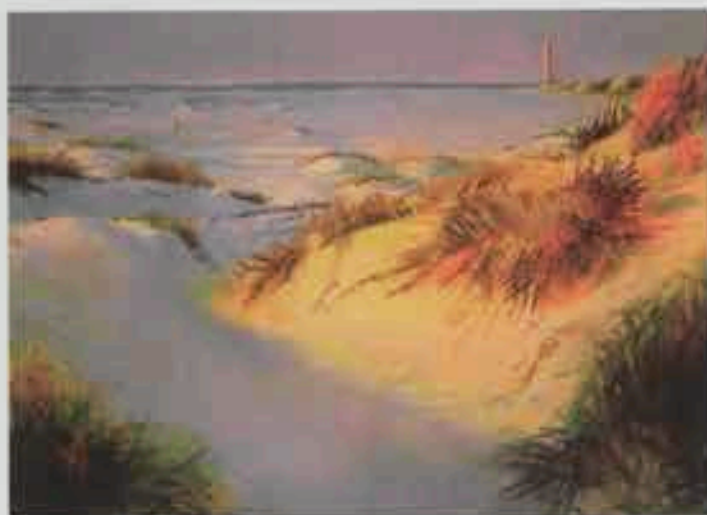
**Tessa Spencer Pryse RBA**  
Anchor Hill, snow 30.5 x 40.5 cms oil



Trevor Frankland RBA FFRWS RIE Hon. RI  
*How Early Morning* 76 x 38 cms watercolour & conte pencil



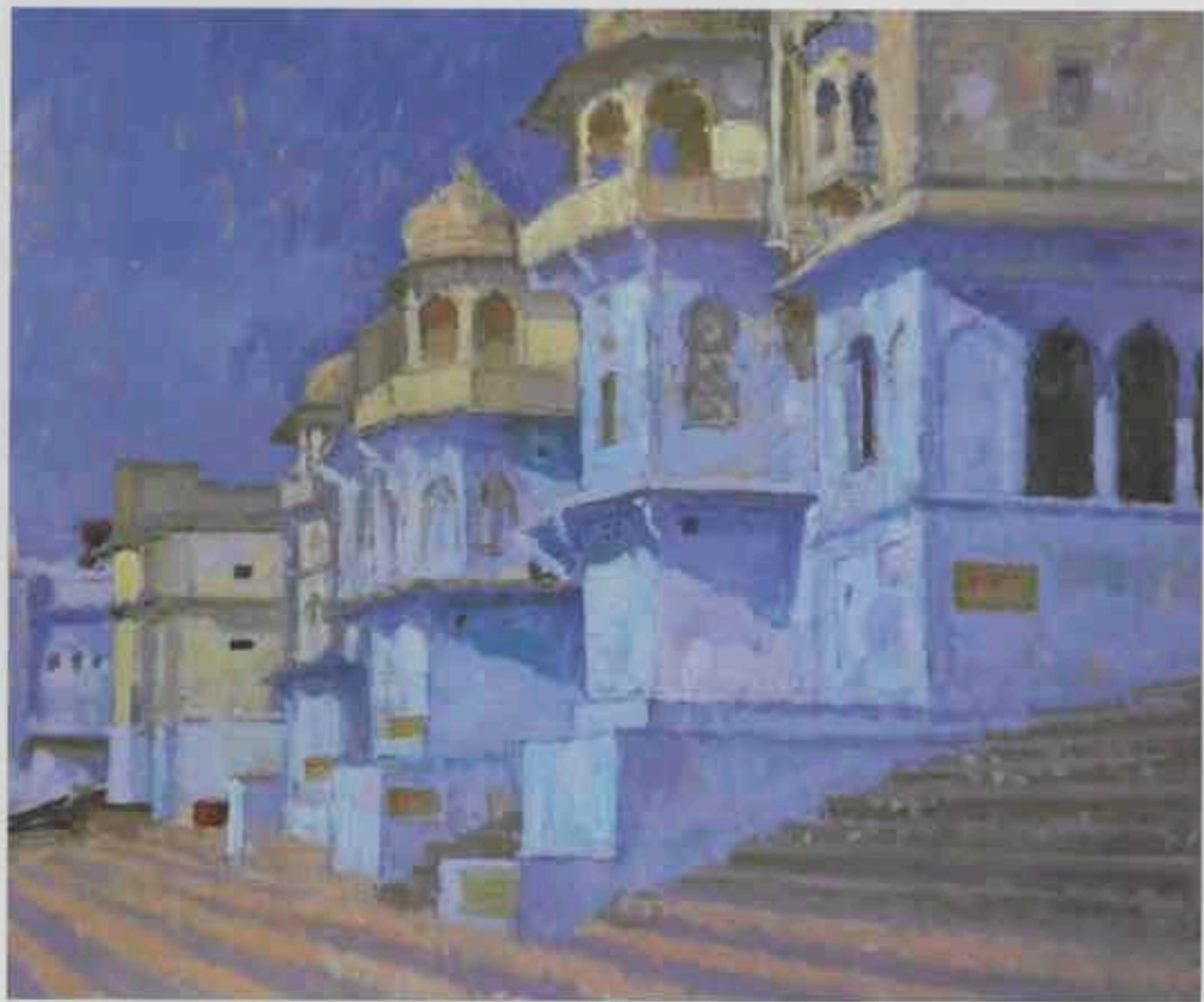
Robert Wells RBA ROI  
*Leather Lane* 91.5 x 91.5 cms oil



Jon Pryke RBA  
*Last Light on the Dunes* 70 x 93 cms pastel



Judith Gardner RBA NEAC  
*Winter Landscape Rough Ground* 81 x 81 cms oil



James Horton FRBA *Pushkar* 38 x 46 cms. oil



Caroline McAdam Clark RBA ARWS  
*Late Road and View* 30.5 x 30.5 cms. oil/pencil



Brian George RBA AROI  
*Bremer Harbour* 35 x 25 cms. oil



Cheryl Culver RBA PS  
*Elegant Birches at the edge of the forest* 70 x 70 cms. pastel



George Devlin RBA RSW RGI ROI RWS FRSA  
*Summer Blossoms* 66 x 71 cms. oil



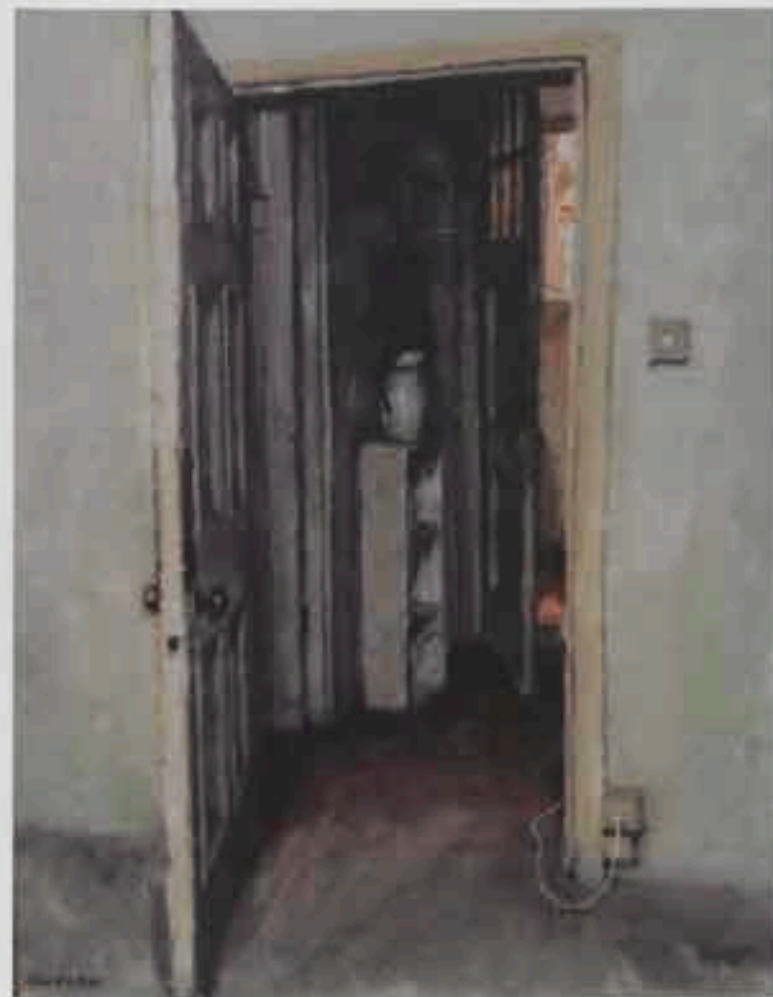
Peter Kelly RBA NEAC *See* Four's Box the Southbank 48 x 61 cms oil



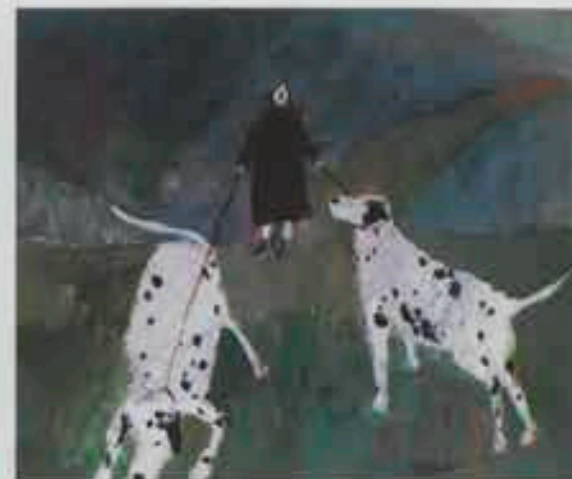
Carol Hubble RBA *Round the Lighthouse* 41 x 31 cms acrylic



Andy Wood RBA RI *Rye Harbour II* 22 x 17 cms acrylic



Charles Hardaker RBA NEAC *Through to the Light* 51 x 40.5 cms oil



Susan Bower RBA RCI *Naughty Dogs* 510 x 490 cms oil on paper



Christopher Hall RBA RCA *Rhydhu* 20 x 29 cms oil on paper



John Martin RBA, *On the Grand Canal*, 15 x 25.5 cms, oil



Stephen Brown RBA  
*Devon Lanes*  
30.5 x 40.5 cms, oil



Margaret Thomas RBA NEAC  
*The Spring Basket*, 74 x 64 cms, oil



Dennis Symett RBA, PPROI, RSMA, *Marguerites & Hollyhocks*, 53.5 x 70 cms, oil



Geoffrey Chatten RBA  
*On Gorleston Beach*  
51 x 38 cms, oil



David Miller RBA  
*Gangway and Postbox, Putney* 58.5 x 79 cms - oil



Juliette Palmer RBA  
*Shed with Winch*  
63 x 50 cms - watercolour



Dorothy Southern RBA  
*Water Lilies, Kew* 84 x 58.5 cms - oil



Richard Cook RBA  
*Harbour at Menton* 93 x 71 cms - oil



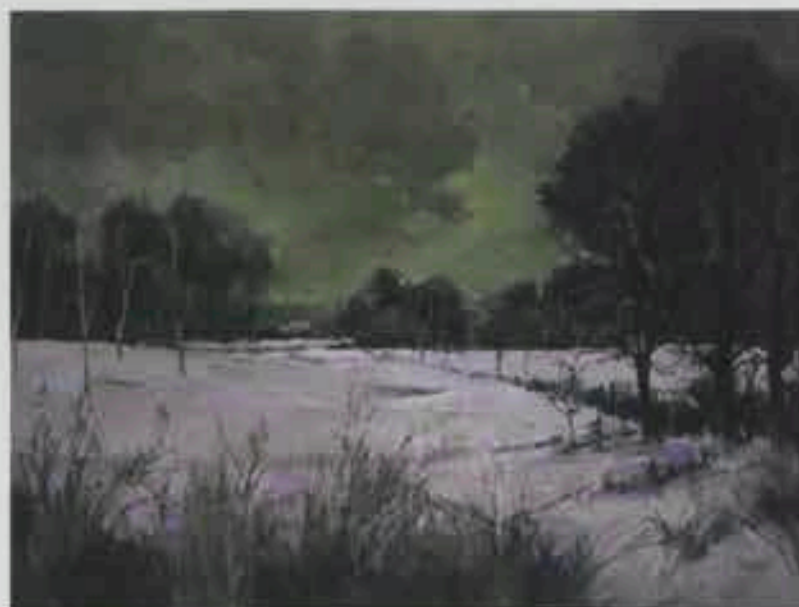
Norma Jameson RBA ROI  
*Dried Seed Heads* 122 x 91.5 cms - oil



Andrew Macara RBA NEAC: Spring Hillier 76 x 62.5 cms oil



Paul Bartlett Sc. RBA RBSA  
The Approacher 14.4 x 21.5 cms  
pencil & charcoal pencil



Tom Wanless RBA RBE: Fields in Winter 51 x 63.5 cms oil



Stephen Darbishire RBA: Enchanted Evening 34 x 29 cms oil



Valerie Warren RBA SWA FSAI Hon. SGFA  
Manshech Souk V11 30 x 40 cms ink



Terry Watts RBA Squall, Weymouth Bay 89 x 87 cms acrylic



Akash Bhatt RBA RWS Claridge's I 25 x 77 cms ink

## LIST OF MEMBERS 2011

## Fellows

CHAPMAN, Dominic  
 CULVER, John  
 DONOVAN, Carol BA (Hons), MA  
 FAIRCLOUGH, Michael BA (Hons), PGCE  
 GARDNER, Colin BA (Hons)  
 HARDING, Michael  
 HARRIS, Philip  
 HORN, John  
 LONDON, Peter  
 PARKES, Rosemary  
 PLASTOW, Malcolm  
 RUSSELL, Chris BA, MA, Cert Ed, FCM  
 THROWER, Dr Michael BA, MA, Hon. FRAG, FRSA  
 WATTS, Rod

## Honorary Members

BECKETT, Frederick FRCA, Hon. FR, ARSWA  
 Finstories, Chilcote Lane, Little Chalfont, Buckinghamshire HP7 9LR  
 01494 764748  
 BELL, Steve  
 BUTLER, James BA, MA, FRCS  
 Valley Farm, Radway, Warwick CV35 0UJ  
 COATES, Thomas FRPS, FRBA, RC, RWS, FRMAC  
 Bledon Studios, Hurstbourne Tarrant, Hampshire SP11 6AH 01264 736530  
 CUMING, Fred RA, DL, NEAC  
 The Gables, Iden, Rye, E. Sussex TN31 7UY  
 DOWLING, Jane RA  
 The Old Dairy, Charlton-on-Otmoor, nr. Islip, Oxfordshire OX5 2UO  
 GREEN, Anthony RA, NEAC  
 40 High Street, Little Eversden, Cambridge CB23 1HE 01223 262290  
 HOWARD, Professor XBA OBE RA, FRMAC, Hon. RCI, RWS, RWA  
 8 South Bolton Gardens, London SW5 6DH 020 7373 2912  
 KING, Sir Phillip CBE, FRSA  
 MADDOX, Ronald FR, Hon. RWS, Hon. RL, FCSB  
 Herons, 21 New Road, Digswell, Welwyn, Hertfordshire AL6 0AQ 01438 714884  
 McCOMB, Leonard RA, Hon. FR  
 4 Blenheim Studios, 29 Blenheim Gardens, London SW2 5EN 020 8671 5510  
 MORRIS, Derek FRSA  
 PACKER, William NEAC  
 60 Trinity Gardens, London SW8 6DR 020 7733 4012

## Senior Members

BARTLETT, Paul FRSA  
 144 Wheelers Lane, Kings Heath, Birmingham B13 0SG 0121 444 8976  
 DARBISHIRE, Stephen J.  
 The Studio, Agnes Gill, Whitwell, nr. Kendal, Cumbria LA8 9EJ 01539 824670  
 ELLIS, Robert  
 23 Barne Place, Birkenhead, Auckland 10, New Zealand  
 ELMORE, Pat  
 Nutford Lodge, Langcote, Farnborough, Oxon SN7 7TW 01793 782258  
 FARRELL, Patrick  
 31 Hazeldene Road, Patchway, Bristol BS12 5DT 0117 969 3524  
 DI GIROLAMO, Cav. OMRI, Romeo Hon. FRSA, Hon. BA, Hon. BAF  
 Sandrock Studios, Sandrock Hill, Sedlescombe, East Sussex TN33 0QR  
 01424 870954  
 HUBBLE, Carole  
 White Lodge, 3 Lower Mill Lane, Deal, Kent CT14 9AG 01304 373987  
 KAY, Pamela NEAC, FRW  
 Fig Tree House, 19 Northdown Avenue, Cliftonville, Margate, Kent CT9 2NL  
 01843 22749  
 KELLY, Peter J. NEAC  
 The Chestnuts, The Square, Stock, Essex CM4 9LR 01277 840621  
 LAMBIRTH, Alan  
 22 Brushwood Road, Rolley, Hove, West Sussex, RH12 4PE 01403 269416  
 MIERS, Christopher  
 114 Bishop's Mansions, Bishop's Park Road, Fulham, London SW6 6DY  
 020 7756 5662  
 ROWAN, David Paul  
 298 Burnley Road, Colne, Lancashire BB8 5JN 01282 867548  
 THOMAS, Margaret NEAC  
 Elingham Mill, nr. Bungay, Suffolk NR35 2EP 01508 516556  
 WARMAN, Oliver RCI  
 Old Rectory Cottage, Whatcote, nr. Shipston on Stour, Warwickshire, CV36 5EB  
 01295 660018  
 Members  
 ASHMAN, Malcolm RCI  
 Greenbank, Kipling Avenue, Bath, Somerset BA2 4RD 01225 312700  
 BALDWIN, Martyn  
 64 Hilbert Road, Harrow Weald, Middlesex HA3 7SS 020 8933 8668  
 BAXTER, Denis, C. RWA  
 Leafy Screen Cottage, 54 Andersen Drive, Sway, Lymington,  
 Hampshire, SO41 6AW 01590 681123  
 BHATT, Akash RWA  
 6 Blunham Court, Harrowdene Road, Wembley, Middlesex, HA9 2JN  
 020 8795 1689



**BONADA, Cinzia**  
9 Alexander Road, East Twickenham, Middlesex, TW1 2HE 020 8892 7828

**BROBBEL, John C.**

**BOWER, Susan** RC  
Larchfield House, Church Street, Barkston Ash,  
Tadcaster, North Yorks. LS24 9PJ 01937 557514

**BROWN, Stephen**  
Apple Orchard, 63 Woolbrook Road, Sidmouth, Devon EX10 6KE 01309 513642

**CAMPION, Sue**  
32 Underdale Road, Shrewsbury, Shropshire SY2 5DW 01743 270491

**CHATTEN, Geoffrey**  
82 Suffolk Road, Gorleston, Great Yarmouth, Norfolk NR31 7AL

**COOK, Richard P.**  
17 Windlesham Gardens, Brighton, East Sussex BN1 3AJ 01273 728000

**CRAWFORD, John G.** FR, RCW  
Dunedin, 34 Strachan Street, Arbroath, Angus DD11 1UA

**CREW, Rowan**  
Brook Farm House, Brock Street, Woodchurch, Ashford, Kent TN26 3SR  
01233 661425

**CULVER, Cheryl** FR  
8 Stone Cross Lees, Sandwich, Kent CT13 0BZ 01304 619921

**DANIELS, Alfred** FRW  
34 Edmond Road, London W4 1JQ 020 8994 5036

**DAVIES, Mick**  
171 Highbury Hill, Islington, London N5 1TB 020 7359 4330

**DEVLIN, George** RC, RCW, RCJ, FRSA, ARWS  
Rosebank, 6 Falcon Terrace Lane, Glasgow G20 0BW 0141 948 2929

**DOUGLAS, Brian D.** HEAC  
26 Whitestone Drive, Huntingdon Road, York YO3 9HZ 01904 652449

**DUNCAN, Clive** FRBS, FRP  
Holme Cottage, Station Road, Shipton, Henley-on-Thames,  
Oxfordshire RG9 3J5 0118 940 2563

**EUSTACE, David**  
13 Melbourne Street, St. Leonards, Exeter, Devon EX2 4AU 01392 277212

**FRANKLAND, Trevor** FRWS, FRAC, FR, FR  
13 Spencer Road, Wandsworth, London SW18 2SP 020 7228 4321

**FREW, Hilary** FRBS  
Dees Holt, Raggleswood, Chislehurst, Kent BR7 5NH 020 9487 1542

**GALTON, Jeremy**  
8 Holders Hill Gardens, London NW4 1NP 07712 668835

**GARDNER, Judith** HEAC  
72 Gladstone Road, Broadstairs, Kent CT10 2JD 01843 663498

**GARFIT, William**  
The Old Rectory, Histon, Cambridge, CB3 7ES

**GEORGE, Brian** ARCI  
Westfield House, 251 Althorn Road, Blackwell, Althorn, Derbyshire DE35 5JH  
01773 810840

**DI GIROLAMO, Megan Ann** FRBS, FRP  
Sandrock Studios, Sandrock Hill, Sedlescombe, East Sussex TN33 0GR  
01424 870554

**DI GIROLAMO, Selina Maria**  
Bona Dea, Manchester Road, Ninfield, East Sussex TN33 8JX 01424 892135

**GREY-JONES, Michael**  
10 Castledown Road, Anerley, London SE20 8PL 020 8659 7018

**HALL, Christopher** RCA  
Catherine Villa, Station Road, Newbury, Berkshire RG14 7LP 01635 42340

**HALSBY, Julian**  
Old Hall, 101 Newland, Sherborne, Dorset DT9 3DU 01935 812177

**HALSBY, Miranda**  
Old Hall, 101 Newland, Sherborne, Dorset DT9 3DU 01935 812177

**HARDAKER, Charles** HEAC  
1 St Oswald's Studios, Sedlescombe Road, Fulham, London SW6 1RH  
020 7386 8905

**HARDY, Laura**  
12 Belize Park, Hampstead, London NW3 4ES 020 7455 5512

**HEAT, Ann**  
Stumps Grove Farm, Whitehill Lane, Ockham, Woking, Surrey GU23 6PB  
01483 285380

**HOLLIDAY, S. J.**  
11 The Down, Trozbridge, Wiltshire BA14 8QN 01225 776505

**HORTON, James**  
11 Victoria Road, Cambridge, Cambridgeshire CB4 3BW 01223 313167

**JAMESON, Norma** RC  
111 Hayes Way, Beckenham, Kent BR3 6RR 020 8650 2551

**LARGE, George** FR  
Afric Cottage, 33 Southview, Uppingham, Rutland LE15 9TU 01572 821053

**LEMAN, Martin**  
1 Malvern Terrace, Islington, London N1 1HR 020 7607 6364

**LEVER, Anna**  
39 Priory Orchard, Wantage, Oxfordshire OX12 5EL 01235 786175

**LOCKWOOD, Arthur** FRSA, FRWS  
Kingswood Hollow, Mill Lane, Lapworth, Warwickshire B94 6HT 01564 753425

**MACARA, Andrew** HEAC  
Aberfoyle, 92 Farley Road, Derby DE23 6BX 01332 396522

**MARTIN, John**  
70 Florence Road, Brighton, East Sussex BN1 6DU 01273 331107

**McADAM CLARK, Caroline** FRW  
49 Larkhall Rise, London SW4 6HT 020 7720 2415

**McCARTHY, Maura**  
Newlyn, Lower Road, Cookham Rise, Maidenhead, Berks. SL6 8EH  
01628 525535

**McCOMBS, John** RC, FRW  
John McCombs Gallery, 12 King Street, Delph, nr. Oldham, Lancashire OL3 5DD  
01457 874705

**MILLER, David**  
First Floor Flat, 76 Auckland Hill, West Norwood,  
London SE27 9QQ 020 8761 5456

**MOORE, Bridget** HEAC  
The Old Laundry Cottage, 18 Cotmandene, Dorking, Surrey RH4 2BT  
01323 680881

**MORGAN, Ronald** RC  
8 Mannal Court, Alfred Street, Bow, London E3 2BH 020 8980 1308

**MYERS, Chris** FR  
Woodside Cottage, Wadhurst Road, Frint, Tunbridge Wells, Kent TN3 9EH  
01892 750508

**NEWSOME, Peter** FRW  
The Limes, 20a York Road, Chesham, Surrey SM2 6RH 020 8661 0705

**ORCHARD, Colin**  
Marlor House, Ayr, St. Ives, Cornwall TR26 1DU 01736 798340

**OUTRAM, Steven**  
The Mission Hall, Forge Hill, Lower Lydbrook, Gloucestershire GL17 9QR  
01594 861495

**OWEN, Don**  
97 Saunders Way, Derwen Fawc, Swansea SA2 8BH 01792 201717

**PALMER, Juliette**  
Mimott Lodge, The Pound, Cookham, Berkshire SL6 9DD 01628 523059

**PARRY, Leigh** FRW  
6 Wharf Road, Stamford, Lincolnshire PE9 2DU 01780 752384

**PORTELLI, Guy** FRBS  
125 St. Mary's Road, Tonbridge, Kent TN11 2NL 01732 364708

**PRYKE, Jon**  
9 Glebe Court, 5 The Glebe, London SE3 9TH 020 8652 7304

**PRYSE, Tessa Spencer**  
12 Alna Street, Wivenhoe, Colchester, Essex CO7 9DL 01206 625382

**RICHARDSON, Barbara**  
71 Engadine Street, London SW18 5BZ 020 8670 9605

**RIZVI, Jacqueline** FRW, HEAC  
24 Sunny Gardens Road, Hendon, London NW4 1RX 020 8803 2424

**SAWYER, David**  
10 Cornhill Street, London SW18 6NF 020 8677 4214

**SELBY, William** RC, FRW, HEAC  
Stonehever, 11 Green Bank Road, Brixham, Devon TQ5 8ND 01603 867213

**SORRELL, Julia** FR  
Manor Farm, Wash Lane, Snetterton, Norfolk, NR16 2LG 01953 496736

**SORRELL, Richard** FRWS, HEAC  
Higher Hellangrove Farm, Badgers Cross, Guval, Penzance,  
Cornwall TR20 6XD 01736 699613

**SOUTHERN, Dorothy**  
13 Spencer Road, London SW18 2SP 020 7228 4321

**SPAREY, Laurence**  
1 Aston Road, Barnet, Herts. EN5 4ET 020 8449 5347

**SPRAKES, John** RC  
39 Douglas Road, Long Eaton, Nottinghamshire NG10 4BH 0115 972 5626

**SYRETT, Dennis** FRW, FRMA  
2 Graham Cottages, Lacey Green, Princes Risborough, Bucks. HP27 0PL  
01844 347596

**TAYLOR, Jane** FRW  
11 Burgh Heath Road, Epsom, Surrey KT17 4LW 01372 720276

**TIDNAM, Nick**  
16 Roebuck Road, Rochester, Kent ME1 1UD 01634 811500

**VERRALL, Nicholas** RC  
Flat 6, Martyns House, 79 London Road, Guildford, Surrey GU1 1YT  
01483 458777

**WANLESS, Tom** RC  
41 Badgerwood Glade, Wetherby, West Yorkshire LS22 7XR 01937 585276

**WARDEN, Peter C.**  
62 St. Anne's Drive, Llanfair Fardre, Pontypridd, Mid Glamorgan,  
Wales CF38 2PD 01443 268119

**WARREN, Valerie** FRW  
34 South Row, Blackheath, London SE3 0RY 020 8652 7964

**WATTS, Terry**  
13 Mycenaee Road, Blackheath, London SE3 7SF 020 8658 7110

**WEAVER, Peter** FR, FRW  
36 Cator Road, London SE26 5DS 020 8778 4134

**WELLS, Robert E.** RC  
2 Ruskin Road, Willington, Eastbourne, East Sussex BN20 9AY 01323 502860

**WILKINSON, John C.**  
Orchard House, Alderholt Road, Sandeheath, Fordingbridge,  
Hampshire SP6 1PT 01425 658048

**WOOD, Andy** FR  
Raffers, Old Brickyard, Rye, East Sussex TN31 7EE 01797 227618

**YATES, Anthony** FRSA  
495 Harborne Park Road, Harborne, Birmingham B17 0PS 0121 426 3694