



# RBA

Royal Society of British Artists

ANNUAL EXHIBITION 2022

mall  
galleries



MH

BUTTERY AND DURABLE,  
THE HANDMADE PAINT  
THAT YOU DREAM OF

MICHAELHARDING.CO.UK



RBA

Royal Society of British Artists

**Annual Exhibition 2022**

**Exhibition open 3 March to 12 March**

**10am to 5pm**

**Mall Galleries, The Mall, London SW1**

*Cover: 'Grey and Purple' by John Sprakes RBA ROI*

Works are available to browse & buy at [www.mallgalleries.org.uk](http://www.mallgalleries.org.uk)  
020 7930 6844 | [info@mallgalleries.com](mailto:info@mallgalleries.com) | [www.mallgalleries.org.uk](http://www.mallgalleries.org.uk)

**mall  
galleries**

## President's Foreword

### "HERE WE ARE AGAIN"

I don't say this lightly or in any way other than with pride and a sense of achievement.

### "HERE WE ARE AGAIN"

Another show featuring the best of figurative art as only the RBA can do it. We are proud to present a range of painting, printmaking and sculpture from some of the most gifted contemporary artists working today. The Society is known for its ability to attract the best works from the young as well as the not so young, from the well-known and those who are just starting out on their artistic journey. We bring this mix together to give you the opportunity to enjoy an exhibition that is, of its type, second to none.

### "HERE WE ARE AGAIN"

For nearly TWO HUNDRED YEARS The Royal Society of British Artists has been home to some of the best loved and most famous artists and has held its Annual Exhibition despite wars, civil unrest and plagues. These shows are special to every member and all those who participate in them.

We like to believe that we learn from the past, engage with the present and look ahead to the future. At the RBA we embrace change and wish to encourage diversity and individuality. We applaud creativity and quality and hope to inspire as best we can. Over the last few years, the population of planet earth has been through difficult times and in a strange way this has made for a global bond



between us all. Maybe this 'pandemic induced bond' is something that has never happened before on such a global scale and may never happen again until, one day in the not-too-distant future, those little green men arrive in their interstellar space ships, open their doors and say...

### "ELLOEARFLINGS... EARWE R AGEN"

We wish to thank our sponsors and prize givers for their continued support and we

thank YOU our army of fans old and new for your loyalty to the Society and its artists.

I will say it one last time...

### "HERE WE ARE AGAIN"

...and we hope to be saying it for many years to come. Enjoy the show, you deserve it.

Warmest regards,

**Mick Davies PRBA Hon RBSA**

## Awards and Prizes

There are a number of prizes and awards available to win at the Annual Exhibition. These include:

### The de Laszlo Foundation Prize

The de Laszlo Medal for Excellence and £1,500 awarded to an artist aged 35 or under for the best work from life

### The Artist Magazine Award

The winner will be featured in The Artist

### Nathan David Award for Sculpture

£150

### The Dry Red Press Award

Work published as a greeting card

### Frinton Frames Award

£200 of picture framing at Frinton Frames

### Hahnemühle Fine Art UK Award

A prize of £250 worth of artist paper

### The Michael Harding Awards

Two prizes of £500 worth of art materials

### The Gordon Hulson Memorial Prize

A prize of £250 for draughtsmanship, variety and exploration

### The Peter Kelly Commemorative Prize

£300

### The Ronald Morgan Memorial Award

£250

### The Geoffrey Vivis Memorial Award

£100

### The Marianne von Werther Memorial Award

The Rame Scholarship for a young artist

### The Winsor & Newton Painting Award

Art materials to the value of £500

### The Stuart Southall Print Prize

£250

### The Surgeon's Prize

£500

### The John Lynn Commemorative Award

for a Young Artist

£500

## Invited Artist: Brendan Neiland



Brendan Neiland has produced many private and public commissions around the world, including work for Rolls-Royce, English Heritage, Gatwick Express and the National Bank of Dubai. In 1986, Neiland won the Scottish Advertising & Design Award for Best Use of illustration in an Advertisement for the Highland Collection. His working stencils and sketches made in preparation for the painting, *Lloyd's*, commissioned by Jardines, were displayed at the Tate Gallery in 1988. Neiland received the John Minton Scholarship in 1968 and was a prize-winner at John Moores Liverpool Exhibition XI in 1976. His work is held in many major UK public collections as well as around the world.

Neiland's fascination with cities is a constant theme in his paintings. He portrays urban environments as 'kaleidoscopic images' formed from an array of elements, using a combination of reflections, skylines and individual motifs collaged together on canvas. His enthusiasm for energetic landscapes has led him to travel globally, including North America, Costa Rica, Singapore and Hong Kong, which are often referenced in his work. Neiland's animated paintings are a beautiful portrayal of the 'exhilarating poetry' of city life, from which he has developed over more than sixty years of painting and printmaking.



**Brendan Neiland** *Pendulum* 120 x 180 £20,000



**Brendan Neiland** *Arcadia* 120 x 180 cm £20,000

## Index of Members

### Members

Chris Aggs  
Malcolm Ashman RWA  
Martyn Baldwin  
Denis Charles Baxter FRSA RWA  
Akash Bhatt  
Annie Boisseau  
Susan Bower ROI  
David Brammield PS RBSA  
Stephen Brown  
Sue Compton  
Geoffrey Chatten  
Austin Cole  
Richard P Cook  
Cheryl Culver PPPS  
Mick Davies Hon RBSA  
Clive Duncon FRSS  
Meg Dutton RE  
Jeremy Galton  
Judith Gardner NEAC  
William Garfit  
Brian George  
Michael Grey-Jones  
Carole Griffin  
Julian Halsby  
Miranda Halsby  
Charles Hardaker NEAC  
Michael Harrison  
Lewis Hazelwood-Horner  
Henry Jabbour PS  
Jill Leman PRWS  
Martin Leman RWS  
Anna Lever  
Lee Madgwick  
John McCormbs ROI  
Christopher Myers RI  
Peter Newsome FRSS  
Vicky Oldfield  
Steven Outram  
Susie Perring  
Melvyn Patterson NEAC  
Guy Portelli  
Jon Pryke  
Barbara Richardson

Jacqueline Rizvi HNEAC  
David Sawyer  
Melissa Scott-Miller NEAC RP  
William Selby NEAC ROI RSW RWS  
Nicola Slattery  
Sarah Spackman  
David Sprakes  
John Sprakes ROI  
Callum Stannard  
Dennis Syrett FROI RSMA  
Malcolm Taylor PS  
Will Taylor  
Nick Tidnam NEAC  
Nicholas Verrall ROI  
Peter Warden  
Terry Watts  
Robert E Wells NEAC  
Annie Williams RE RWS  
Anne Wright  
Anthony Yates RBSA

### Senior Members

Paul Bartlett RBSA  
Cinzia Bonada  
Rowan Crew  
Stephen Darbishire  
Pat Elmore  
Megan Di Girolamo FRBS  
Cav. Romeo Di Girolamo Hon RBSA  
Laura Hardy  
Ann Heat  
James Horton  
Carole Hubble  
Pamela Kay NEAC RWS  
Alan Lambirth  
George Large Hon Rtd RI  
John Martin  
Christopher Miers  
Bridget Moore NEAC RWS  
David Paul Rowan  
Richard Sorrell NEAC PPRWS  
Tessa Spencer Pryse  
John C Wilkinson

### Honorary Members

Fred Beckett Hon RI FROI RSMA  
Olwyn Bowey RA  
Peter Brown PNEAC PS ROI RP  
James Butler FRBS RWA  
Joyce Cairns HRA HRHA FRSA RSW HRWA  
Torn Coates HNEAC PPPS RP RWS  
Frederick Cuming NEAC RA Hon ROI  
Jane Dowling  
Steve Evans PRBSA  
Anthony Green NEAC RA Hon ROI  
Ken Howard HNEAC OBE RA RBSA FROI RWA  
Andrew Marr  
William Packer NEAC Hon PS  
Shanti Panchal  
Michael Sandie RA  
Jacqueline Taber  
Huaicun Zhang

### Honorary Members (Overseas)

Sixiao Feng  
Hosen Nakamura

It is with great sadness that since our last Annual Exhibition we have to record the death of David Eustace, Hilary Frew FRBS, David Miller, Laurence Sparey and Peter Weaver RI. We shall miss them all!

To contact any artist, please email [hansac.rba@gmail.com](mailto:hansac.rba@gmail.com) or see the artist's page on the RBA website at: [www.royalsocietyofbritishartists.org.uk](http://www.royalsocietyofbritishartists.org.uk)

## Illustrious Past Members of the RBA

Since its foundation in 1823, the Society of British Artists (became Royal in 1887) has been a magnet for some of Britain's most celebrated artists. A peruse through the Society's exhibition catalogues reads like a 'Who's Who' of British virtuosity. Listed is a small selection of artists who were members of the Society:  
**Researched and compiled by Anthony J Lester FRBA FRSA and Liam Culver FRBA**



**James McNeill Whistler (1834-1903)**

RBA Member 1884, RBA President 1886-1888. He showed *Arrangement in Black, No.2: Portrait of Mrs Louis Huth and A Little Red Note: Dordrecht*, in the Society's 1884 Winter Show.

Reviewing the exhibition, *The Times* (3 December 1884) wrote:

"Mr Whistler's 'Arrangement in Black - Portrait of Mrs. Louis Huth' (299) will, of course, attract the most attention of any work in the gallery. Artistic society was startled a week ago by the news that this most wayward, most un-English of painters had found a home among the men of Suffolk Street of all people in the world; and this portrait and a small water-colour sketch are the evidence which he gives of his attachment to his new abode."



**Sir Alfred East RA (1848-1913)**

RBA Member 1883, the year he showed *Craik, Fifehire: Evening, after rain*, a watercolour priced at £15-15-0. He was President from June 1906 until his death on 28 September 1913.



**Walter Richard Sickert RA (1860-1942)**

He first exhibited at the RBA in 1884, the subject being *Portrait Sketch*. Reviewing the 189th Exhibition *The Times* (26 March 1928) wrote:

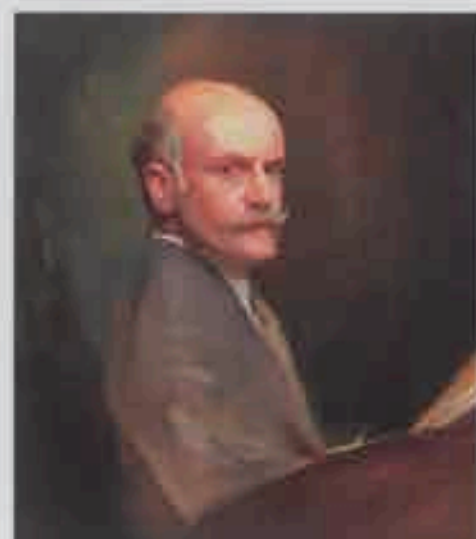
"His election to the office is, indeed, matter for congratulation, and with his technical soundness and extremely tolerant attitude towards artistic ideals quite different from his own he should call out the best of which the Society is capable."

Whistler was too flippant for native prejudice, Sir Alfred East too decorative, and the late Mr. Solomon J. Solomon, though he set a good standard in oil painting of the seductive kind, was not sufficiently aware of the time of day."



**Sir Frank Brangwyn RA (1867-1956)**

RBA Member 1890 and he was President from 1 December 1913 - 21 October 1918. Although he received some tuition from his architect father, he was primarily self-taught. Brangwyn's reputation was international - his remarkable artistic versatility can be admired at the Brangwyn Museum, Dijkver 16, 8000 Brugge, Belgium.



**Philip Alexius de László MVO RBA (1869 - 1937)**

Philip de László was an Anglo-Hungarian painter known particularly for his portraits of royal and aristocratic personages.



**Lawrence Stephen Lowry RA (1887-1976)**

RBA Member 1935. First exhibited winter 1934 (*Street Scene; Lancashire Village and Street Scene*, each priced at £31-10-0). One of his most important works, *The Regatta*, was included in the summer 1951 exhibition priced at £250. Lowry's painting *The Football Match*, bought for £250 in 1951 sold for £5.6 million in 2011 at Sotheby's.

## RBA RISING STARS 2022

The 'RBA RISING STARS' exhibition will be held this year at the Royal Over-Seas League in the heart of Mayfair from 29th April – 3rd July 2022 and this show forms part of our Rome Scholarship judging process. The submissions for the Scholarship are whittled down to 40 young contenders aged 18 – 35 years by the RBA Education Committee.

Three finalists will be chosen and interviewed for the month long stay in Rome. The winning candidate will receive £1000 spending money, flights plus lodging and board at Sala Uno, a prestigious Gallery in the heart of the Roma. The runners-up will receive £250 each.

This wonderful opportunity is due to the generous bequest of Marianne von Werther, a past member. The galleries, museums and architecture are inspirational in Rome.

The work may be seen on the ROSL website and on the RBA website and social media platforms. For sale enquiries, please email Robin Footitt at: rfootitt@ros.org.uk

Good luck to all this year's hopefuls!



Fanny Arnesen 'Dance with me'



Nicholas Baldion 'The eviction'



Clark Broadwood-Smith 'Exposed Vessel'



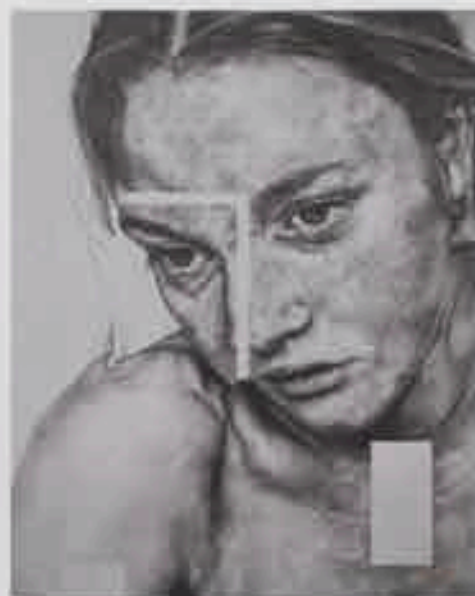
Edward F Butler 'The Cranes of Belfast'



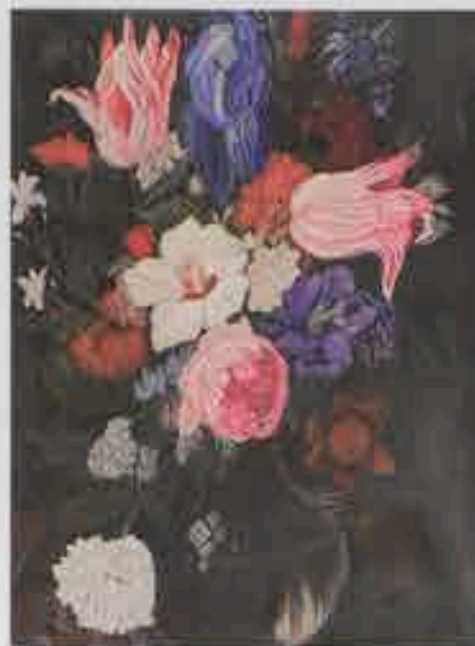
Seabomna Choe 'Forced Choice'



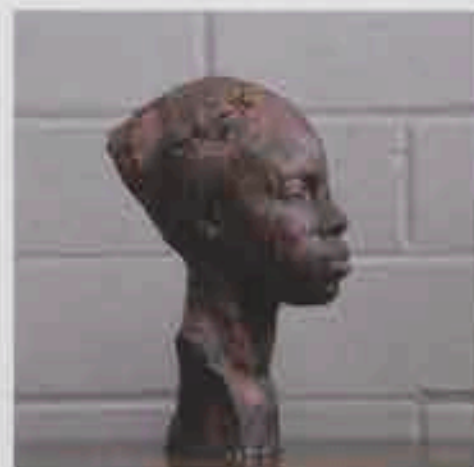
Louisa Clark 'Balcony Heat'



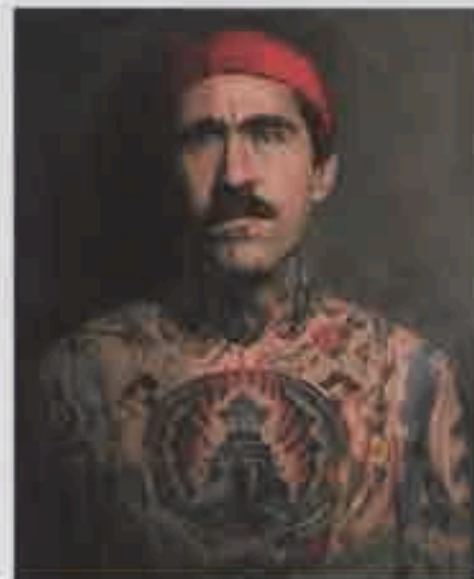
Eleanor Dunn 'Don't You Think It Looks Tired?'



Jorja Ellington 'Still life with flowers'



Poppy Field 'Fatima'



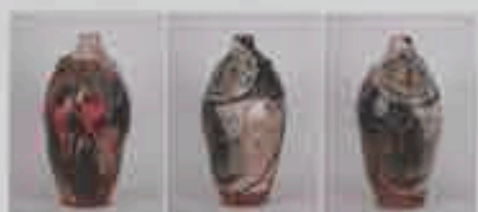
Toby Gawler 'Tunnel Vision'



Emily Gillbanks *Three Things*



Lily Hargreaves *'Bar At Nod's'*



Alex Heard *'Dante and Virgil walk past the storm of lust'*



Yeon Ju *'She brings the rain'*



Tedi Lena *'Artist Frank Bowling'*



Habib Hajjille *'The British Dream'*



Ottelien Hucklin *'Susanna Bathing'*



Zoe Lambert *'British summertime 2'*



Katrine Lyck *'Peak'*



Niall MacCrann *'The Untold'*



Eleni Maragaki *'National Garden of Athens'*



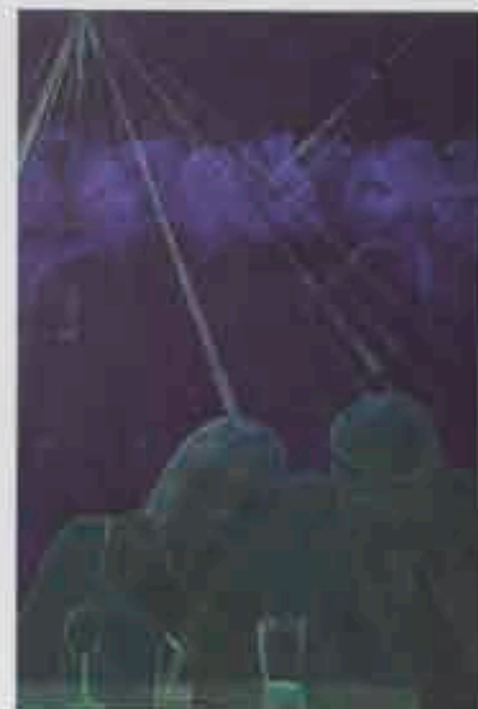
Rufus Martin *'Isaac'*



Alice Miller *'PaleBlue'*



Rebecca Munday *'Untitled'*



Emily North *'Ex Static // Ecstatic'*



Valeria Nuyanzina 'Angel Step'



Samuel Owusu Achlaw  
'Portrait of Mahershala Ali'



Selina Pope 'Heartbreak'



Aaron Rigal 'AMAAD'



Elena Orwochei-Garcia  
'The Roots and Culture Lawyer in Prison'



Chris Polunin 'Space'



Sabrina Rosenheim  
'Thalmina in the Kitchen'



Zuzanna Salamon 'And that day the air  
was carrying the smell of the Sun'



Grace Tobin  
'Flowers with Names Forgotten'



Agnes Treherne 'Fawn'



Filip Velkovski 'Tenants'



Purdey Williams 'Matt Hancock running'



Naomi Workman 'The Parakeets'



Yuhan Ye 'I See IV'



Diana Zrnica 'Space Between Us'



## The RBA 'Further Education Project'



We have received funding of £389,174 for this project from Turing UK [British Council] and shall be giving students from 'disadvantaged' areas of the UK, the opportunity to receive work experience in France, Italy, Malta and Spain.

We created a consortium with 4 FE colleges - one each in Birmingham, Manchester, Hereford, and Haringey in London. This mobility concerns 104 Further Education students, 28 from each college, plus 16 accompanying teachers. The students will complete 3-week placements in companies and organisations related to the creative industries. Also included will be 4 recent graduates from each college, who

will have 8-week internships. This means that in total 120 young people will benefit from this experience.

The accompanying teachers will provide on-going support to students in the conduct of activities, and they will also have a tutor from the receiving organisations who will offer further support and monitoring.

The aim of this project is to promote the participation of students from disadvantaged backgrounds, with a particular focus on participants from ethnic minorities, who are still poorly represented in 'the arts' workplaces.

### It will enable students to:

- Connect with the art and culture world in an international context
- Raise their confidence as artistic individuals with a more comprehensive knowledge of future job prospects
- Have an important travel scholarship to add to their CV
- Develop their independence [although they will be well supervised]
- Gain valuable experience in a work environment of their choice
- Enjoy the opportunity to travel abroad
- Mix with people from different cultures.

**These mobilities will start in April and will finish in August 2022.**

## The RBA Annual Exhibition 2022 Hanging List

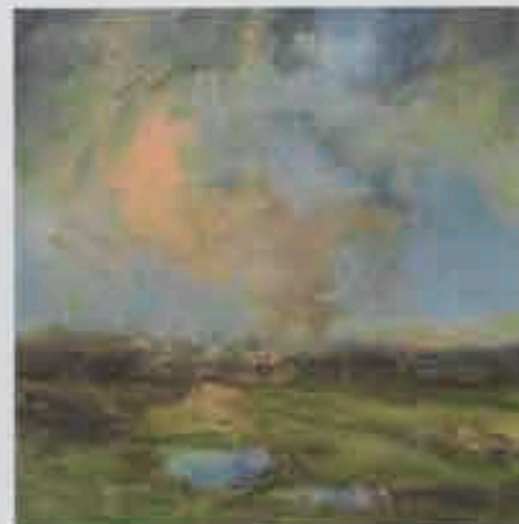
Steve Outram *To Be Free* Oil 52 x 62 cm £4,250



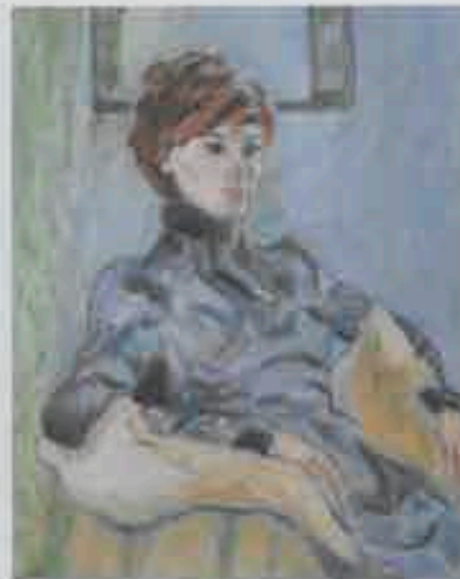
**Christopher Aggs** *Two Camellias*  
Oil 25 x 25 cm £850



**Martyn Baldwin** *Big Girl* Oil 50 x 73 cm £4,200



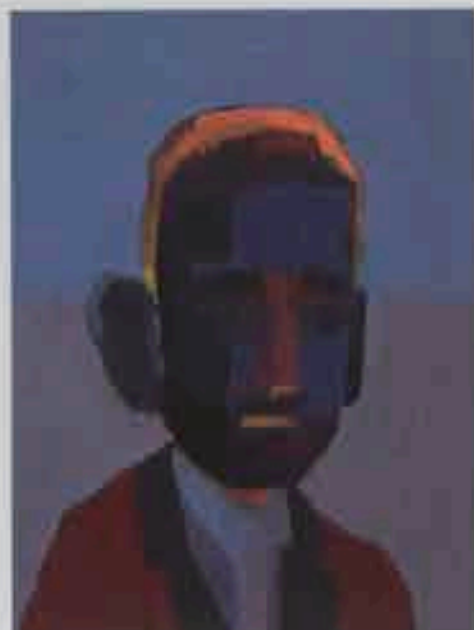
**Annie Boisseau** *After The Rain*  
Oil 30 x 30 cm £795



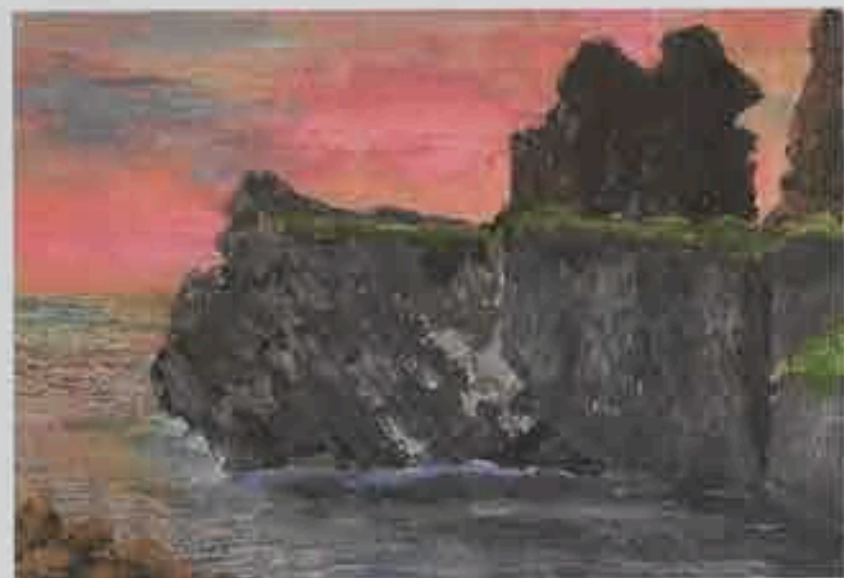
**Cinzia Bonada** *L'Espagnole*  
Oil 43 x 37 cm £700



**David Brammell** *Misty Morning*  
Acrylic 40 x 30 cm £925



**Malcolm Ashman** *Against the day*  
Acrylic 20 x 15 cm £480



**Denis Baxter** *The Abandoned Quarry at Aberliddy* Collage 55 x 53 cm £2,150



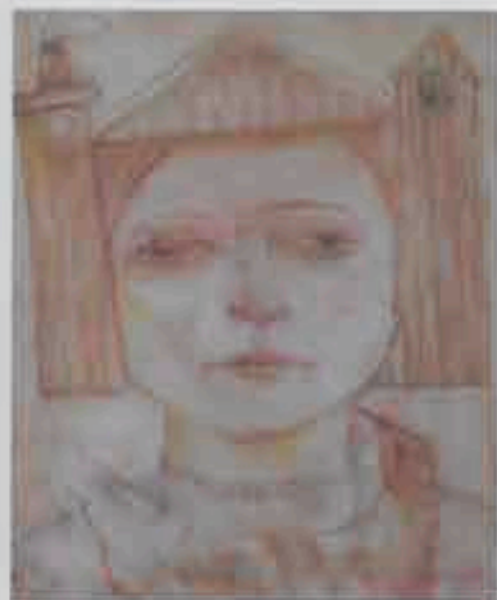
**Susan Bower** *Party Girls* Oil 45 x 56 cm £2,600



**Stephen Brown** *The Beach at Beer* Oil 15 x 23 cm £525



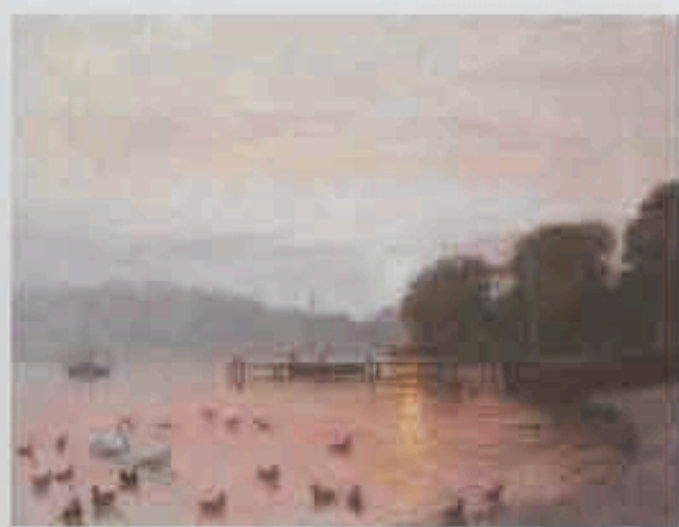
Sue Camplon *Raisins Drying near Competa* Pastel 61 x 76 cm £2,900



Joyce W Cairns *Girl with the Pearl Necklace*  
Watercolour 56 x 56 cm £1,800



Richard Cook *Shimla - Afternoon Strollers* Oil 40 x 55 cm £1,400



Stephen Darbishire *Sunset over Windermere*  
Oil 32 x 43 cm £1,500



Austin Cole *Borough Market 7* Etching with aquatint 13 x 57 cm £390



Cheryl Culver *So Green that Mystical Land*  
Pastel 48 x 48 cm £995



Mick Davies *The Queen Mary arriving in New York on her maiden voyage from Southampton* Acrylic & Ink 60 x 91 cm £2,750



**Meg Dutton** *Inner Garden*  
Etching & Watercolour 89 x 66 cm £1,150



**David Eustace** *The Empty Glass*  
Oil & Acrylic 24 x 20 cm



**Hilary Frew** *Together*  
Lead Crystal 33 x 22 cm



**Steve Evans** *Shaft*  
Ink on Perspex & Board 60 x 60 cm £500



**Jeremy Galton** *Evening Sun over Venice*  
Oil 51 x 61 cm £2,750



**Julian Halsby** *Morning Exercise, La Tamarissiere*  
Oil 38 x 51 cm £800



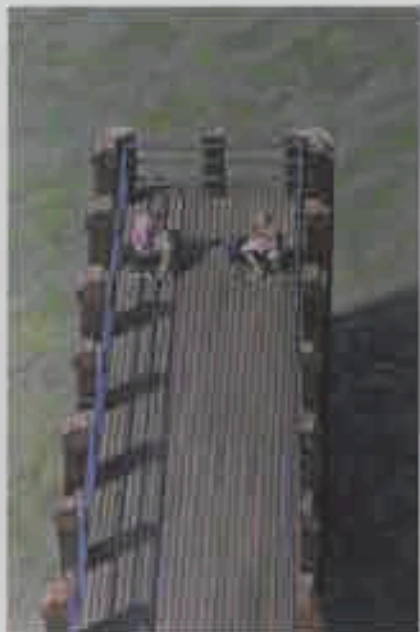
**Carole Griffin** *Norfolk Poppy Fields*  
Oil 123 x 93 cm £5,500



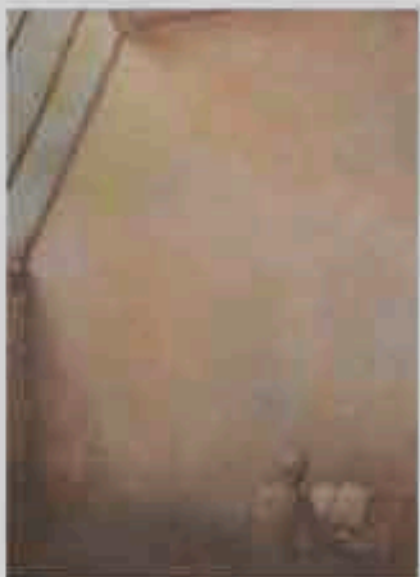
**Brian George** *Retail Park* Oil 80 x 80 cm £1,400



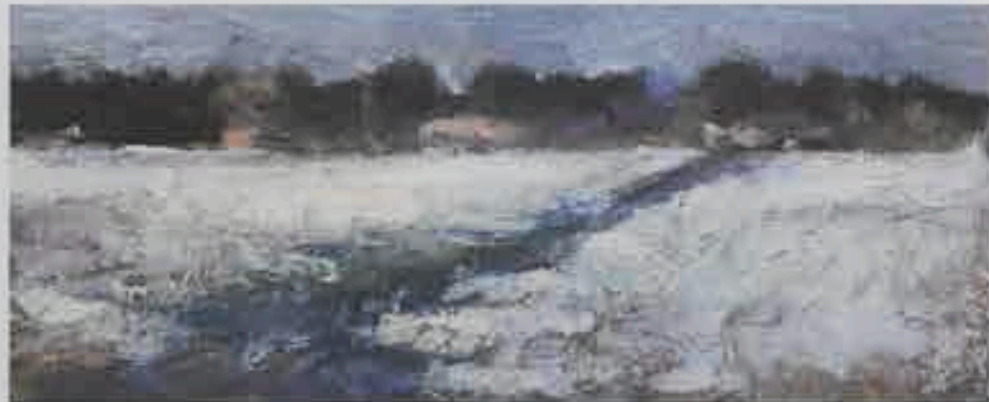
**Miranda Halsby** *French Summer, Languedoc* Etching & Aquatint  
48 x 58 cm £400



**Michael Grey-Jones** *Lunch On The Pier Below Tate Modern* Oil 36 x 25 cm £1,650



**Charles Hardaker** *Prelude* Oil 100 x 75 cm £4,500



**Michael Harrison** *Crisp And Even* Oil 13 x 31 cm £550



**Lewis Hazelwood-Horner** *Billingsgate* Oil 76 x 102 cm £8,000



**Ann Heat** *Yellow violas* Oil 21 x 22 cm £920



**Carole Hubble** *The entertainer & her dog* Oil 27 x 31 cm £850



**James Horton** *Hollyhocks at Walberswick* Oil 41 x 51 cm £1,600



**Henry Jabbour** *Traces Of My Youth* Oil on Linen 106 x 90 cm £4,500

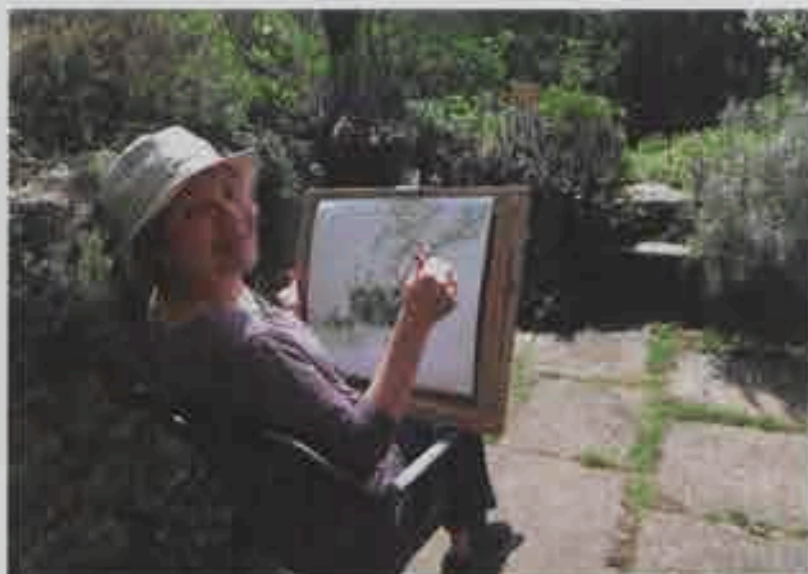
## Winner of The Whistler Award 2021: Annie Williams RBA RE RWS

The Whistler Medal is presented to an RBA member chosen by his or her peers. The award is seen as a mark of respect and appreciation for a fellow artist, whose artistic work and/or efforts on behalf of the Society have contributed greatly to its betterment and well-being.

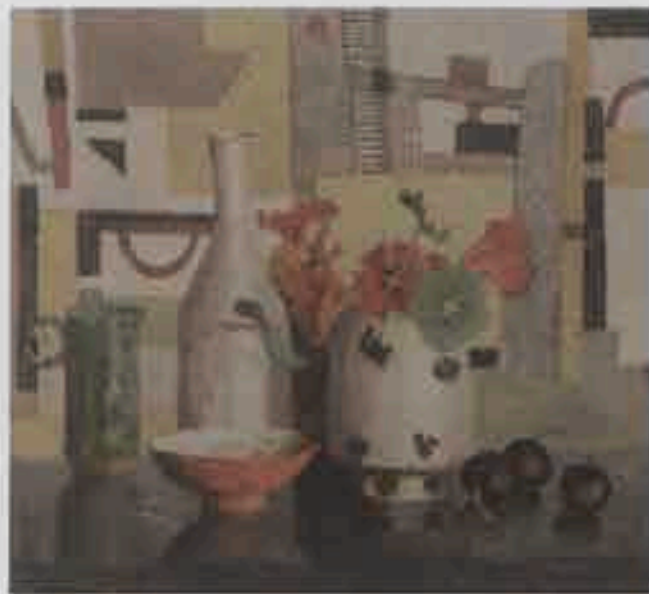
Annie says: "I would like to thank all the members of the RBA for this honour. I am very chuffed to have been given the Whistler Award in 2021 and really proud to be a member of this prestigious society. This award has given me great encouragement and I look forward to exhibiting with the Society in their future exhibitions."

Annie lives and works mainly in London and, since joining the RBA, her watercolours and etchings have been almost entirely still life with abstract backgrounds, which are either worked from an arrangement she sets up in her studio from a collage of paper cut-outs pinned onto a board, or simply created from her imagination.

As well as being admired and respected for her distinctive artwork, her contributions to the Society have also been very much appreciated. She has served as a member of our Education Committee and our Selection Committee and also offered her services as a steward during our exhibitions and helped with preparations for RBA social occasions. Annie is a very worthy winner of this award.



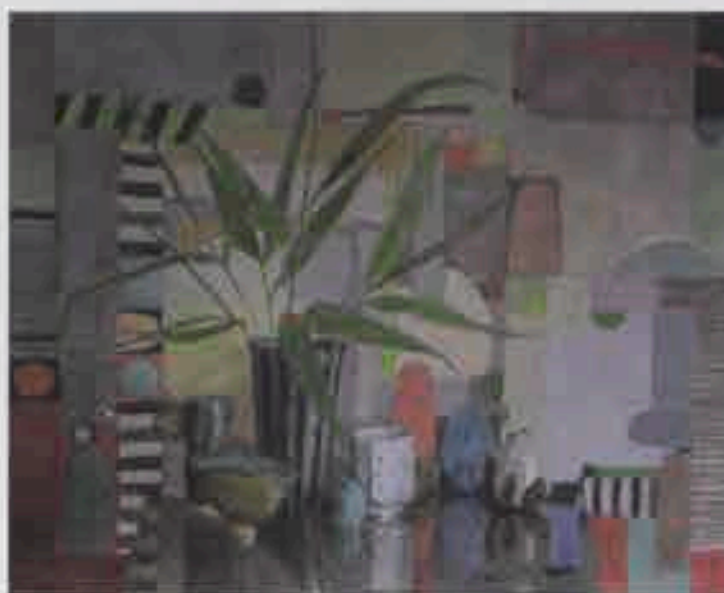
Annie Williams *Late Hellebores* Watercolour 27 x 37 cm £800



Annie Williams *Three Cherries* Etching & Wash 15 x 18 cm £200



Annie Williams *Purple Honesty* Watercolour 27 x 37 cm £600



Annie Williams *Bamboo II* Watercolour 40 x 50 cm £850



Annie Williams *Longing For Summer* Watercolour 40 x 50 cm £900



Martin Leman *On The Box* Oil 25 x 28 cm £2,000



John McCombs *Companions* Oil 37 x 46 cm £795



Christopher Miers *Prayer Ghat, Varanasi* Tempera 25 x 35 cm £850



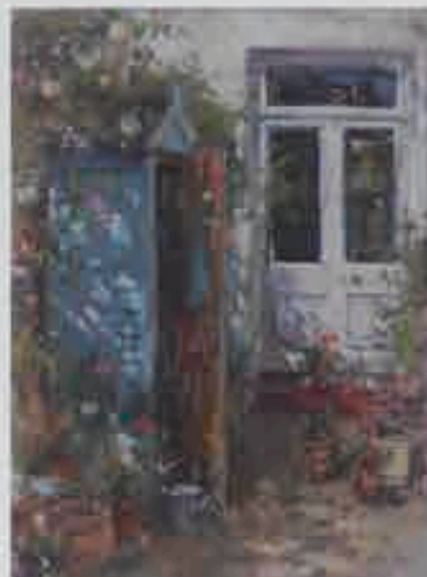
Bridget Moore *Welcome* Gouache 24 x 28 cm £850



Jill Leman *Now & Then* Watercolour 37 x 46 cm £850



Anna Lever *Captain Tom's Final Journey with a Burmese Tiger and a Union Flag* Ceramic 33 x 14 x 10 cm



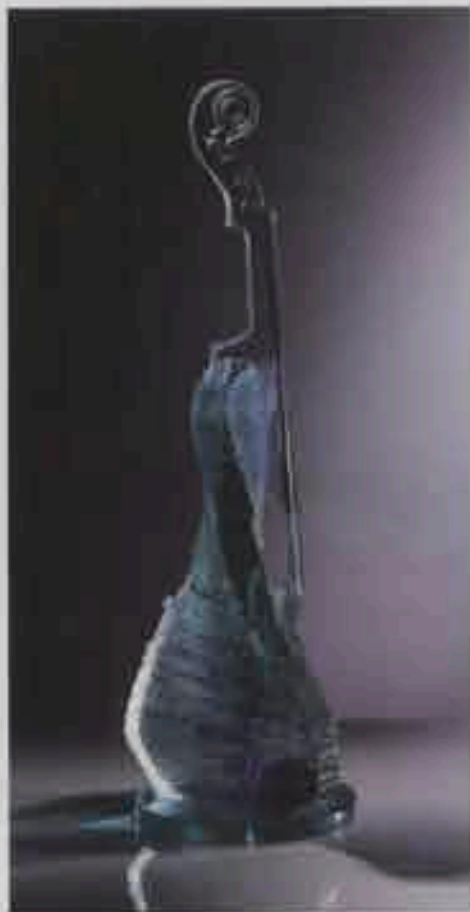
John Martin *Summer Potting Shed* Oil 40 x 30 cm £1,950



David Miller *Woman with Flowers* Oil 48.2 x 45.5 cm



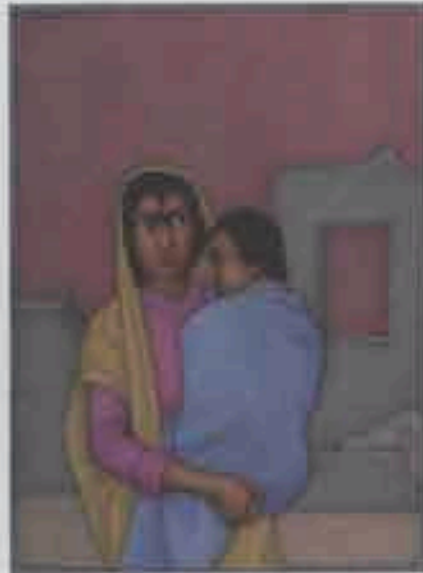
Chris Myers *Roots* Watercolour 42 x 60 cm £1,750



**Peter Newsome** *Violin Movement*  
Glass 70 x 26 cm £4,800



**Vicky Oldfield** *Bottles, Books and Flowers*  
Collagraph 69 x 50 cm £695



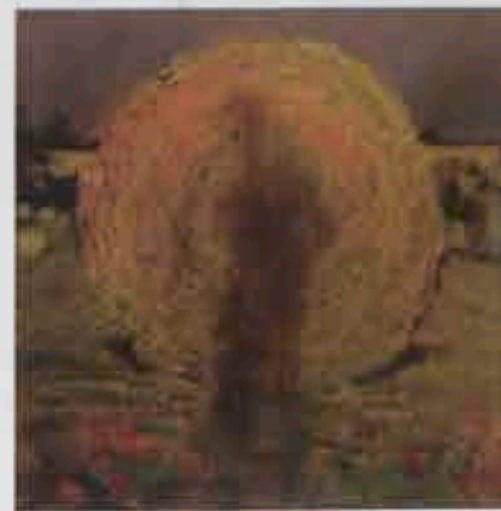
**Shanti Panchal** *Mother and Child*  
Watercolour 38 x 28 cm £4,500



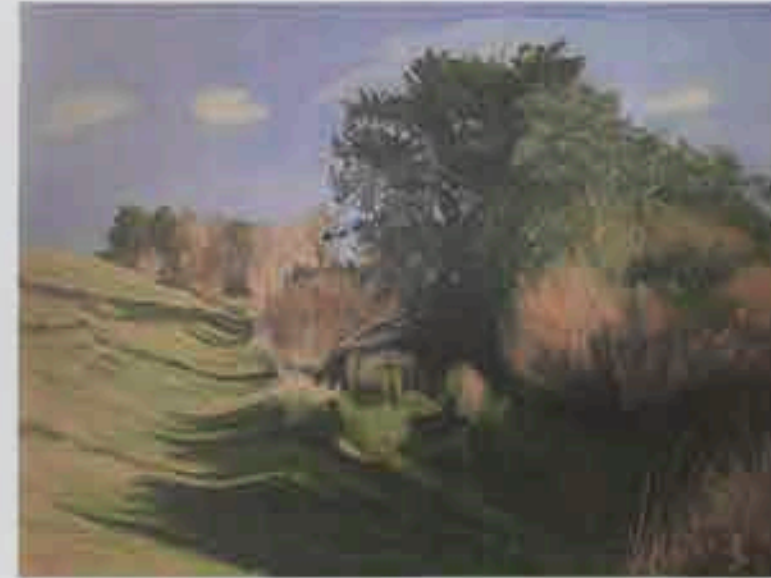
**Steven Outram** *Far Out* Oil 81 x 76 cm £7,000



**Susie Perring** *Standing Horse, Left*  
Watercolour 27 x 22 cm £529



**Jon Pryke** *Moon Bale*  
Pastel 29 x 32 cm £400



**Melvyn Petterson** *Near Humberston Fitties* Oil 44 x 59 cm £2,250



**Barbara Richardson** *Still Life With Model of a Cat from Paris*  
Oil 17 x 18 cm £850





David Sawyer *Memorium* Oil 28 x 50 cm £1,600



Melissa Scott-Miller *Night view of Russell Square tube*  
Oil 60 x 60 cm £2,000



Sarah Spackman *Little Bunch* Oil 20 x 25 cm £895



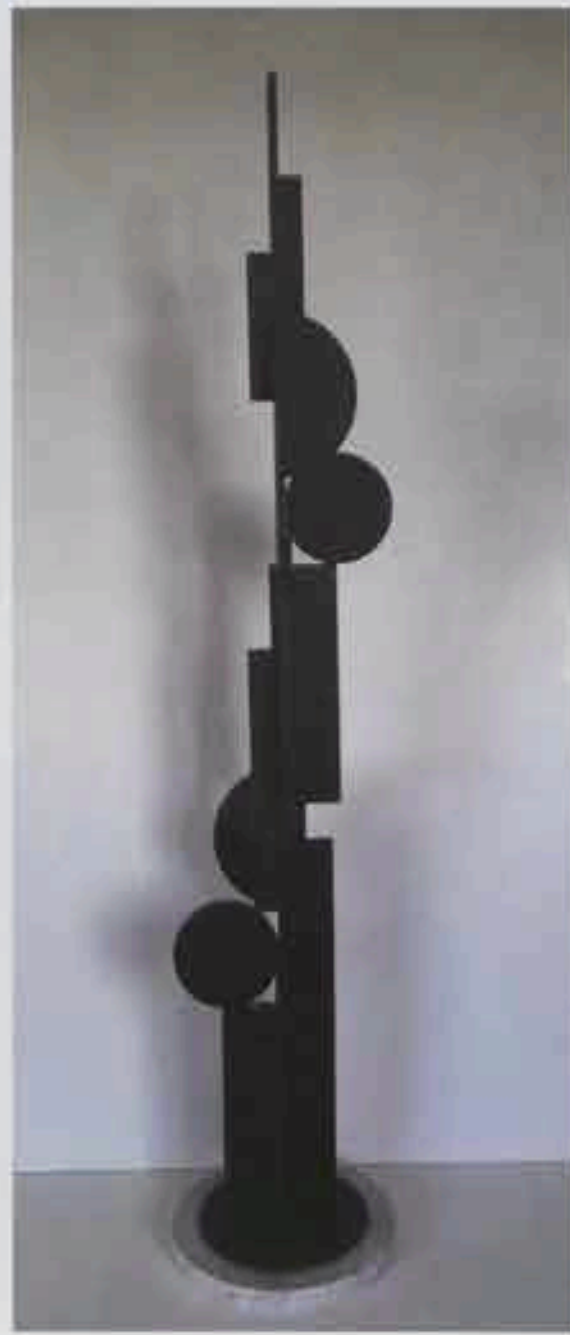
Richard Sorrell *Girl and Dog* Oil 61 x 45 cm £1,700



Nicola Slattery *Man of Peace*  
Acrylic on wood 40 x 40 cm £3,500



Laurence Sparey *Woogy Boog*  
Aluminium & Acrylic 60 x 70 cm £5,000



David Sprakes *Watcher* Steel 38 x 20 x 20 cm £1,500



**John Sprakes** *Orange Triangle on Blue Square*  
Mixed Media 37 x 39 cm £500



**Jacqueline Taber** *Swans Feather & Tangerines* Oil 23 x 64 cm £995



**Callum Stannard** *Portrait of my Father*  
Wax 28 x 29 x 20 cm £700



**Nick Tidnam** *Dungeness* Acrylic 28.5 x 28.5 cm £600



**Will Taylor** *The Grange II*  
Etching 25 x 20 cm £395



**Nicholas Verrall** *Leigh Estuary Morning* Oil 36 x 50 cm £3,750



**Terry Watts** *Wall with gorse flowers* Acrylic 45 x 64 cm £1,800



**Robert E Wells** *Windsack, Cornwall* Oil 34 x 45 cm £2,200



**Peter Weaver** *Roots Shrine*  
Mixed Media 71.3 x 36.5 x 36.5 cm £4,500



Anne Wright *Old Doorway, Syria*  
Oil 46 x 29 cm £950



Anthony Yates *Stantibus Homini*  
Etching 14 x 8 cm £185



Huaicun Zhang *The Spring*  
Chinese ink 95 x 100 cm £2,000



The works for sale in the RBA Annual Exhibition are available to buy through the Own Art scheme. Own Art interest free loans make it easy and affordable to buy original, high quality contemporary art and craft.

Representative 0% APR. Subject to status. Terms and conditions apply. Applicants must be at least 18 years old.

	Name	Title	Medium	Size (cm)	Framed	£
1	Suzanne Abell	Abell	Bronze	46 x 24 x 18		3,500
2	Suzanne Abell	Kleiri Meije	Jasmonite, Acrylic & Gold Leaf	112 x 53 x 25		3,900
3	Hun Adamoglu	Dapple Dream	Oil	50 x 30	63 x 43	1,800
4	Hun Adamoglu	View of St-Sophia Cathedral	Oil	80 x 60	88 x 68	4,000
5	Christopher Aggs RBA	Artichokes in Full Sun	Oil	40 x 61	54 x 75	1,200
6	Christopher Aggs RBA	Chilli Plant in Studio Window	Oil	61 x 51	75 x 65	1,600
7	Christopher Aggs RBA	Primroses And Primulas	Oil	20 x 25	34 x 39	800
8	Christopher Aggs RBA	Queensland Blue	Oil	35 x 41	49 x 55	850
9	Christopher Aggs RBA	Two Camellias	Oil	25 x 25	39 x 39	850
10	Catherine Allison	Pug	Oil	30 x 40	44 x 44	380
11	Charles Amos	Redlined	Oil		90 x 90	950
12	Tatiana An	Fly of Butterfly, Diptych	Acrylic & Collage	80 x 160		6,800
13	Kayoon Anderson	Daniel	Oil	100 x 80		3,000
14	Kayoon Anderson	Stairwell Scene	Pencils	21 x 15	23 x 17	600
15	Rachel Arif - AMAFA	Always the Bridesmaid	Oil on Fabriano Paper	20 x 15	25 x 20	795
16	Rachel Arif - AMAFA	Torn	Oil on Fabriano Paper	15 x 15	25 x 25	825
17	Malcolm Ashman RBA RWA	Ariel	Watercolour & Pencil	54 x 35	75 x 55	1,200
18	Malcolm Ashman RBA RWA	Against the day	Acrylic	20 x 15	31 x 26	480
19	Malcolm Ashman RBA RWA	Taking Another Moment to Think	Acrylic	20 x 15	31 x 26	480
20	Tania Askar	Croc	Acrylic	138 x 102	142 x 106	1,500
21	John Aylward	Trapped	Acrylic	42 x 30	44 x 32	300
22	Martyn Baldwin RBA	Big Girl	Oil	50 x 73	69 x 91	4,200
23	Martyn Baldwin RBA	Little Donna	Oil	26 x 30	38 x 42	1,500
24	Martyn Baldwin RBA	Pink Donna	Oil	36 x 28	48 x 36	1,500
25	Martyn Baldwin RBA	Rose	Oil	36 x 22	48 x 36	1,500
26	David Barrow	Summer in the parks	House Paint	30 x 30	35 x 35	800
27	David Barrow	The gold fish pond	Oil	50 x 75	60 x 95	1,200
28	Edith Barton	Feels Like Home to Me	Oil	31 x 31	41 x 41	600
29	Edith Barton	Hidden Behind	Oil	30 x 30	40 x 40	500
30	Denis Baxter RBA FRSA RWA	Cannington Viaduct	Etching & Aquatint		45 x 33	260
31	Denis Baxter RBA FRSA RWA	Celebrating the end of lockdown	Lino Cut	48 x 40	60 x 50	240
32	Denis Baxter RBA FRSA RWA	Durdie Door	Collage		37 x 40	950
33	Denis Baxter RBA FRSA RWA	Old Harry Rocks, Dorset	Collage		66 x 47	2,450
34	Denis Baxter RBA FRSA RWA	The Abandoned Quarry at Aberlady	Collage		53 x 53	2,150
35	Ivo Belajic	King Fish Eats Penguin	Oil	30 x 22	30 x 43	2,350
36	Ivo Belajic	Proposal	Oil	21 x 15	33 x 27	1,750
37	Ivo Belajic	You're the One	Oil	30 x 22	41 x 34	2,350
38	Fred Bennett	Asparagus and Ham	Mixed media	30 x 40	40 x 48	450
39	Lisa Benson	Upon Reflection - West Street Beach	Lino cut	27 x 35	54 x 44	345

Name	Title	Medium	Size (cm)	Framed	£	
40	Kate Bentley SWA	Isolation and thought (Brantwood)	Oil & Mixed media	28 x 38	52 x 62	995
41	Kate Bentley SWA	Walk while ye have the light, lest darkness come upon you'-Ruskin	Watercolour	45 x 60	76 x 89	1,995
42	Natalie Bird	Snow, January Morning	Mixed media	30 x 20	40 x 30	575
43	Annie Boisseau RBA	After The Rain	Oil	30 x 30	45 x 45	795
44	Annie Boisseau RBA	Pathway to Cuckmere Haven	Oil	80 x 80	86 x 86	1,895
45	Annie Boisseau RBA	The Rising Mist	Oil	30 x 30	45 x 45	795
46	Annie Boisseau RBA	The Tree-bordered Lake	Oil	40 x 40	55 x 55	1,100
47	Annie Boisseau RBA	Winter Dawn	Oil	30 x 30	45 x 45	795
48	Cinzia Bonada Sen RBA	L'Espagnole	Oil		43 x 37	700
49	Cinzia Bonada Sen RBA	Still Life on Blue Runner	Watercolour		26 x 32.5	690
50	Sam Boughton	Estuary Blues	Ink & Pastel	25 x 67	45 x 87	750
51	Susan Bower RBA ROI	Fame hasn't changed me	Oil	54 x 40	59 x 40	2,600
52	Susan Bower RBA ROI	Frozen Lake	Oil	36 x 36	43 x 43	1,900
53	Susan Bower RBA ROI	Jogging	Oil	37 x 47	42 x 52	2,300
54	Susan Bower RBA ROI	Night Flight	Oil	46 x 56	51 x 61	2,500
55	Susan Bower RBA ROI	Party Girls	Oil	46 x 56	51 x 61	2,600
56	Gabrielle Bradshaw	Lean Back	Metal	40 x 48 x 8		975
57	David Brammeld RBA PS RBSA	Exposed Moorland	Acrylic	28 x 38	38 x 48	915
58	David Brammeld RBA PS RBSA	Hidden Valley	Acrylic	30 x 40	40 x 50	925
59	David Brammeld RBA PS RBSA	Late Summer Stroll	Acrylic	21 x 30	31 x 40	795
60	David Brammeld RBA PS RBSA	Misty Morning	Acrylic	40 x 30	50 x 40	925
61	David Brammeld RBA PS RBSA	Quiet Morning Walk	Acrylic	28 x 38	38 x 48	915
62	Scott Brockett	Bather	Watercolour	36 x 51	45 x 61	2,150
63	Stephen Brown RBA	A Summer Walk	Oil	60 x 76	79 x 94	2,750
64	Stephen Brown RBA	Bathers Sidmouth	Oil	15 x 23	25 x 33	525
65	Stephen Brown RBA	The Beach at Beer	Oil	15 x 23	25 x 33	525
66	Ingrid Brown	Chester Lying on Green Blanket	Oil	11 x 15	21 x 25	300
67	Christy Burdock	Control the Canaries	Acrylic	100 x 50		950
68	Carol Bbye	Orange Field	Oil	46 x 61		1,790
69	Joyce W Cairns Hon RBA PRSA RSW	Girl with the Pearl Necklace	Watercolour	56 x 56	75 x 64	1,800
70	Joyce W Cairns Hon RBA PRSA RSW	Sun Drenched	Oil	57 x 41	77 x 59	1,500
71	Dea Campbell	Cabin Fever	Acrylic	50 x 50	53 x 53	750
72	Dea Campbell	Pushback	Acrylic	30 x 30	33 x 33	500
73	Sue Champion RBA	Almond Blossom in the Alpujarras	Pastel	30 x 30	46 x 46	1,150
74	Sue Champion RBA	Blackthorn Hillside	Pastel	36 x 41	54 x 59	1,450
75	Sue Champion RBA	Raisins Drying near Competa	Pastel	61 x 76	79 x 94	2,900
76	Sue Champion RBA	Yachts in the Bay	Pastel	36 x 41	54 x 59	1,450
77	Sue Champion RBA	Yellow House and Crescent Moon	Pastel	51 x 61	69 x 79	2,150

Name	Title	Medium	Size (cm)	Framed	£	
78	David Canter	Bat	Metal	40 x 20 x 20	40 x 20	2,450
79	Alessandro Carboni	Safari	Wood, Faux fur, Metal & Pitt helmet	56 x 26 x 32		2,200
80	Claire Chandler	Stray from the path	Mixed media on aluminium	13 x 13		350
81	Alex Chanter	Constants	Oil	40 x 50	46 x 56	2,850
82	Gordon Close	A White Horse and Figures in a Landscape	Ink, Gouache & Acrylic on paper	27 x 36	50 x 57	650
83	Gordon Close	Carpenter with Tools and Whippet II	Lithograph	15 x 10	25 x 20	190
84	Austin Cole RBA	A walk in Betws Y Coed	Etching on copper	10 x 25	27 x 40	210
85	Austin Cole RBA	A walk in Kamakura	Etching on copper	12 x 29	30 x 42	240
86	Austin Cole RBA	Borough Market 5	Etching with aquatint	10 x 55	27 x 74	380
87	Austin Cole RBA	Borough Market 7	Etching with aquatint	13 x 57	27 x 75	390
88	Mike Coleman	Oak Legacy	Acrylic	26 x 16	44 x 34	2,200
89	Simon Conolly ARSMA	Cattle Auction	Stoneware	40 x 90 x 13		3,600
90	Richard Cook RBA	A View of the Alhambra	Oil	23 x 58	33 x 68	800
91	Richard Cook RBA	Palace Pier in Winter Sunshine	Oil	30 x 61	40 x 71	1,600
92	Richard Cook RBA	Shimla - Afternoon Strollers	Oil	40 x 55	50 x 65	1,400
93	Richard Cook RBA	South Downs Landscape, Sun and Shadows	Oil	36 x 60	47 x 71	1,600
94	Richard Cook RBA	The Thames At Twickenham	Oil	37 x 76	47 x 86	1,600
95	Anne Courtine	The Old Winding Gear, Chatterley	Pastel	40 x 60	40 x 60	1,500
96	Niamh Coutts	Natural History	Screen-print	50 x 71	57 x 79	320
97	Roger Cromwell	October Evening	Oil	39 x 25	50 x 36	1,600
98	Cheryl Culver RBA PPS	A Sombre Place	Pastel	38 x 38	49 x 49	695
99	Cheryl Culver RBA PPS	Rushing through the valley	Pastel	69 x 69	80 x 80	1,975
100	Cheryl Culver RBA PPS	So Green that Mystical Land	Pastel	48 x 48	59 x 59	995
101	Cheryl Culver RBA PPS	So Much Rain	Pastel	48 x 48	59 x 59	995
102	Cheryl Culver RBA PPS	Standing Sentinel	Pastel	69 x 69	80 x 80	1,975
103	Stephen Darbishire Sen RBA	Autumn	Oil	24 x 34	36 x 45	950
104	Stephen Darbishire Sen RBA	Falling Leaves	Oil	30 x 40	40 x 51	1,250
105	Stephen Darbishire Sen RBA	Snowfall, Skelwith Force	Oil	26 x 40	42 x 56	1,000
106	Stephen Darbishire Sen RBA	Sunset over Windermere	Oil	32 x 43	48 x 59	1,500
107	Mick Davies PRBA	The Crowd That Turns in Circles	Acrylic & ink on paper		165 x 134	7,500
108	Mick Davies PRBA	The First Strip Show in the Valleys	Hand-coloured etching		58 x 78	450
109	Mick Davies PRBA	The Queen Mary arriving in New York on her maiden voyage from Southampton	Acrylic & Ink		60 x 91	2,750
110	Stephane Deguilhen	Tiger	Root of Heather	56 x 47 x 62		15,000
111	Yang Dong	Above the Ground	Bronze	49 x 90 x 28		10,000
112	Yang Dong	Walking Alone	Bronze	37 x 66 x 11		9,000
113	Jane Duff	Over Wittenham woods to Dorchester Abbey	Oil	80 x 80	90 x 90	1,800
114	Shaun Duke	Liz in White Shirt	Oil	56 x 38	75 x 55	800
115	Shaun Duke	Self-portrait at Night	Oil	21 x 15	30 x 25	500

	Name	Title	Medium	Size (cm)	Framed	£
116	Shaun Duke	Self-portrait Looking Over Shoulder	Oil	13 x 13	25 x 25	300
117	Meg Dutton RBA RE	Hedgerow	Etching & Watercolour	91 x 61	115 x 85	1,150
118	Meg Dutton RBA RE	Inner Garden	Etching & Watercolour	89 x 66	107 x 85	1,150
119	Meg Dutton RBA RE	Night Garden	Watercolour & Ink		50 x 50	875
120	Meg Dutton RBA RE	Sunflowers	Watercolour & Ink		41 x 41	550
121	Meg Dutton RBA RE	The Exotic Facade	Etching & Watercolour	75 x 68	92 x 85	900
122	Antonia Enthoven	Girls Talk	Etching	11 x 7	24 x 20	210
123	Antonia Enthoven	Tea n' Talk	Etching	11 x 7	24 x 20	210
124	David Eustace (1950-2021)	Dreaming Fields	Oil & Acrylic		20 x 24	NFS
125	David Eustace (1950-2021)	The Empty Glass	Oil & Acrylic		24 x 20	NFS
126	Steve Evans Hon RBA PRBSA	Duct	Ink on Perspex & Board	60 x 60	60 x 60	500
127	Steve Evans Hon RBA PRBSA	Shaft	Ink on Perspex & Board	60 x 60	60 x 60	500
128	Yu Fan	Wind Watching	Bronze	42 x 57 x 20		6,000
129	Fei Feng	Outside the Window	Tempera	40 x 30		20,000
130	Nina Fisher	The Chess-Set in Front of the Mirror	Plywood, Gouache & Paper mache	70 x 70 x 20		350
131	Sally Fitchard	Doublet	Ceramic	18 x 8.5 x 14.5		650
132	Sally Fitchard	Temperate	Ceramic	19.5 x 9 x 14		400
133	Hilary Frew (1934-2021)	Expecting	Bronze	60 x 22 x 16		NFS
134	Hilary Frew (1934-2021)	Together	Lead Crystal	33 x 22 x 18		NFS
135	Jeremy Galton RBA	BT Tower from Primrose Hill	Oil	55 x 40	63 x 48	1,500
136	Jeremy Galton RBA	Evening Sun over Venice	Oil	51 x 61	75 x 90	2,750
137	Victoria Garland	Night, Trinity Churchyard	Etching & Aquatint	20 x 26	41 x 44	190
138	Brian George RBA	Beach Steps	Oil		51 x 41	650
139	Brian George RBA	Boston Quay	Oil		62 x 86	950
140	Brian George RBA	Private Pool	Oil		36 x 45	550
141	Brian George RBA	Retail Park	Oil		80 x 80	1,400
142	Hilary Jean Gibson	Barbara Hepworth's Garden	Mixed media	31 x 41	50 x 61	795
143	Rosie Good	Chalk Paths	Oil	60 x 40	70 x 50	750
144	Rosie Good	Through the Trees	Oil	20 x 15	41 x 35	450
145	Sam Goodison	Converse	Ceramic	38 x 32 x 20		600
146	Lawrence Green	Green Crag and Haystacks from the southern flank of Fleetwith Pike	Watercolour	27 x 80	42 x 95	6,000
147	Caroline Greene	Mortehoe, North Devon	Oil	30 x 40	44 x 54	450
148	Michael Grey-Jones RBA	Lunch On The Pier Below Tate Modern	Oil	36 x 25	56 x 45	1,650
149	Michael Grey-Jones RBA	Whitstable Bookshop Window	Watercolour	30 x 40	50 x 60	1,950
150	Carole Griffin RBA	Between Form and the Indefinable	Oil	43 x 43	44 x 44	1,500
151	Carole Griffin RBA	New Spring Growth	Watercolour	58 x 78	79 x 100	825
152	Carole Griffin RBA	Norfolk Poppy Fields	Oil	123 x 93	124 x 94	5,500
153	Carole Griffin RBA	Shocking Pink I	Watercolour	57 x 79	79 x 100	790

	Name	Title	Medium	Size (cm)	Framed	£
154	Carole Griffin RBA	Tulips and Stripes	Oil	20 x 20	35 x 35	650
155	Rebecca Moss Guyver	Autumn Staycation Still life	Tempera	31 x 20	45 x 34	450
156	Jackie Gwyther	Silver Birch	Oil	123 x 30	134 x 41	1,500
157	Habib Hajallie	Dadabhai Naoroji	Pen on Antique Map	49 x 54	54 x 59	6,500
158	Habib Hajallie	Heaven Lies Beneath the Feet of Your Mother	Pen	59 x 84	63 x 88	7,500
159	Habib Hajallie	Wampanoag Power	Pen	59 x 42	63 x 46	4,500
160	Julian Halsby RBA	Fishing For Sea Bass, Golfe de Lion	Oil	38 x 51	48 x 61	800
161	Julian Halsby RBA	Morning Exercise, La Tamarissiere	Oil	38 x 51	48 x 61	800
162	Julian Halsby RBA	On The Beach, Antigua	Oil	33 x 45	43 x 55	650
163	Julian Halsby RBA	The White Nothe, Dorset, High Summer	Oil	38 x 51	48 x 61	800
164	Julian Halsby RBA	Waves, Patterns and Rocks	Oil	33 x 45	43 x 55	650
165	Miranda Halsby RBA	Blue on Guard	Etching & Aquatint	31 x 25	33 x 27	250
166	Miranda Halsby RBA	Fish in the Blue Green Sea	Print	55 x 42	67 x 51	400
167	Miranda Halsby RBA	French Summer, Languedoc	Etching & Aquatint	48 x 58	53 x 62	400
168	Miranda Halsby RBA	Languedoc View	Etching & Aquatint	38 x 68	43 x 74	500
169	Miranda Halsby RBA	Look into the Harbour	Etching & Aquatint	46 x 38	52 x 45	350
170	Evangelia Hamilton	Trees in Holland Park - Warm	Drypoint on Copper Plate	40 x 28	50 x 40	260
171	Mark Hannon	Boris Boris	Acrylic	50 x 40	64 x 54	945
172	Charles Hardaker RBA NEAC	Earthen Object	Oil	50 x 40	60 x 50	2,500
173	Charles Hardaker RBA NEAC	Metal Object	Oil	40 x 30	50 x 40	1,950
174	Charles Hardaker RBA NEAC	Prelude	Oil	100 x 75	110 x 85	4,500
175	Charles Hardaker RBA NEAC	Water	Oil	50 x 40	60 x 50	2,500
176	Michael Harrison RBA	Crisp And Even	Oil	13 x 31	27 x 45	550
177	Michael Harrison RBA	Hedgerows In Snow	Oil	10 x 30	24 x 44	550
178	Michael Harrison RBA	Petworth Park	Oil	20 x 35	34 x 50	700
179	Michael Harrison RBA	Royal Wedding Trees	Oil	13 x 60	27 x 74	850
180	Frances Hatch	Where the Limestone Pavement Sits Above Malham	Watercolour and site earths	16 x 21	31 x 38	520
181	Martin Hayward-Harris	Flying Falcon	Wood & Steel	80 x 38 x 48		5,000
182	Lewis Hazelwood-Horner RBA	Big Fish, Small Box	Oil	61 x 71	65 x 75	4,900
183	Lewis Hazelwood-Horner RBA	Billingsgate	Oil	76 x 102	80 x 106	8,000
184	Lewis Hazelwood-Horner RBA	Message In A Bottle	Oil	26 x 26	26 x 26	750
185	Lewis Hazelwood-Horner RBA	Nick at the Bar	Oil	30 x 40	33 x 43	900
186	Lewis Hazelwood-Horner RBA	The Draft	Oil	50 x 50	57 x 57	4,000
187	Ann Heat Sen RBA	Faded rose	Oil	12.5 x 14.5	27 x 29	520
188	Ann Heat Sen RBA	Morning mist	Oil	27 x 30	41 x 44.5	970
189	Ann Heat Sen RBA	Violas and handles	Oil	16 x 16	29 x 29	590
190	Ann Heat Sen RBA	Yellow violas	Oil	21 x 22	34.5 x 36	920
191	Angela Herbert-Hodges	Flying	Mixed Media	30 x 30	34 x 34	600

Name	Title	Medium	Size (cm)	Framed	£
192	Aylal Heydarova	Oil		75 x 90	3,000
193	Georgina Heywood-Smith	Engraving	42 x 30	46 x 33	190
194	Lesley Hilling	Wood & Recycled Media	120 x 70 x 70		6,000
195	Aelfred Hillman	Oil	43 x 38	45 x 40	850
196	Rebecca Holton	Oil on Linen	55 x 100	59 x 104	10,900
197	Jane Hooper	Oil	40 x 50	43 x 53	1,250
198	Benjamin Hope NEAC PS ROI RP RSMA	Oil	36 x 31	46 x 41	1,700
199	James Horton PPRBA	Oil	41 x 51	110 x 140	1,600
200	James Horton PPRBA	Oil	92 x 87	107 x 102	6,000
201	James Horton PPRBA	Oil	92 x 112	107 x 127	6,000
202	James Horton PPRBA	Oil	90 x 122	110 x 140	7,500
203	James Horton PPRBA	Oil	66 x 87	78 x 99	3,800
204	Carole Hubble Sen RBA	Oil	31 x 25	41 x 35	850
205	Carole Hubble Sen RBA	Oil	27 x 31	51 x 40	850
206	Carole Hubble Sen RBA	Oil	27 x 25	41 x 35	850
207	Ottelien Huckin	Japanned Panel	29 x 21 x 2	32 x 24	350
208	Ben Hughes	Oil	61 x 61	76 x 76	1,600
209	Philipp Humm	Oil	121 x 182	121 x 182	20,200
210	Henry Jabbour RBA PS	Oil on Linen	75 x 70	80 x 75	3,500
211	Henry Jabbour RBA PS	Oil on Linen	106 x 90		4,500
212	Henry Jabbour RBA PS	Oil on Linen	131 x 91		5,000
213	Barbara Jackson	Etching & Aquatint	17 x 13	32 x 27	300
214	Barbara Jackson	Etching & Aquatint	18 x 14	34 x 28	320
215	Shelley Jacobs	Ink	48 x 48	50 x 50	400
216	Joanna Jass	Pen		32 x 40	500
217	Frederick Jones	Wood	37 x 20	55 x 37	350
218	Hassan Kazeme	Limewood	45 x 28 x 27		650
219	Hassan Kazeme	Limewood	45 x 28 x 15		650
220	Wendy Kimberley	Acrylic	31 x 31	40 x 40	380
221	Alan Lambirth Sen RBA	Oil	60 x 48	80 x 70	3,500
222	Simon Laurie	Acrylic	28 x 23	38 x 33	800
223	Lindsey Lavender	Acrylic & Oil	90 x 64	92 x 66	3,500
224	Jill Leman RBA PRWS	Watercolour	38 x 32	48 x 42	650
225	Jill Leman RBA PRWS	Acrylic	20 x 20	33 x 33	550
226	Jill Leman RBA PRWS	Watercolour	38 x 56	46 x 63	850
227	Jill Leman RBA PRWS	Acrylic	22 x 22	33 x 33	550
228	Jill Leman RBA PRWS	Watercolour	37 x 46	43 x 53	850
229	Martin Leman RBA RWS	Oil	28 x 28	46 x 46	2,000
230	Martin Leman RBA RWS	Oil	13 x 18	22 x 26	450

Name	Title	Medium	Size (cm)	Framed	£
231	Martin Leman RBA RWS	Oil	21 x 21	36 x 36	1,250
232	Martin Leman RBA RWS	Oil	25 x 28	46 x 46	2,000
233	Martin Leman RBA RWS	Oil	20 x 20	34 x 34	850
234	Tedi Lena	Oil	76 x 61	78 x 63	4,500
235	Marie Lenclos	Oil	70 x 60	72 x 62	2,900
236	Anna Lever RBA	Ceramic	33 x 14 x 10		
237	Lorena Levi	Oil	70 x 50		2,500
238	Rosemary Lewis	Oil	20 x 25		650
239	Jingfeng Li	Pen & Ink	74 x 55		45,600
240	Jiaxi Li	Knitted Textile	42 x 55 x 53		1,150
241	Sarah Lightman	Watercolour	30 x 42	36 x 46	1,000
242	Sarah Lightman	Watercolour	42 x 30	46 x 36	1,000
243	Lisa Lindqvist	Bronze	25 x 55 x 35		2,100
244	Cuiping Liu	Oil on Linen	80 x 80		40,000
245	Louisa Longstaff-Scales	Oil & Acrylic	30 x 30	37 x 37	380
246	Sally Loughridge	Drypoint Print	30 x 25	50 x 40	330
247	Sharon Low	Linocut	15 x 20	40 x 50	350
248	John Martin Sen RBA	Oil	30 x 40	43 x 53	1,950
249	John Martin Sen RBA	Oil	25 x 31	38 x 43	1,600
250	John Martin Sen RBA	Oil	40 x 30	53 x 43	1,950
251	John Martin Sen RBA	Oil	26 x 50	39 x 63	2,500
252	John Martin Sen RBA	Oil	25 x 35	37 x 47	1,600
253	John McCombs RBA ROI	Oil	37 x 46	37 x 46	795
254	John McCombs RBA ROI	Oil	34 x 45	34 x 45	795
255	John McCombs RBA ROI	Oil	32 x 45	53 x 67	795
256	John McCombs RBA ROI	Oil	33 x 49	54 x 69	795
257	Mark McLaughlin	Oil	31 x 61	41 x 71	2,650
258	Mark McLaughlin	Oil	51 x 66	61 x 77	3,250
259	Christopher Miers Sen RBA	Tempera		25 x 35	850
260	Christopher Miers Sen RBA	Tempera		25 x 35	850
261	Christopher Miers Sen RBA	Tempera		25 x 35	850
262	Christopher Miers Sen RBA	Tempera		25 x 35	850
263	Elaine Milford	Ceramic	98 x 18x18		507
264	David Miller (1931-2021)	Oil	71 x 51	63.5 x 83.5	NFS
265	David Miller (1931-2021)	Oil	48.2 x 45.5	59.5 x 55.4	NFS
266	Timothy Mitchell	Aquatint Etching	29 x 42	33 x 46	300
267	Tom Mole	Oil	15 x 21	17 x 23	395
268	Bridget Moore Sen RBA NEAC RWS	Gouache	20 x 30	39 x 48	850

Name	Title	Medium	Size (cm)	Framed	£	
269	Bridget Moore Sen RBA NEAC RWS	Welcome	Gouache	24 x 28	44 x 46	850
270	Karin Moorhouse	The Year Turning 1	Oil on linen	70 x 50		1,850
271	Chris Myers RBA RI	Afternoon in the Park	Watercolour	42 x 42	65 x 65	1,500
272	Chris Myers RBA RI	Albatross Cafe	Watercolour	42 x 42	65 x 65	1,500
273	Chris Myers RBA RI	Roots	Watercolour	42 x 60	64 x 82	1,750
274	Chris Myers RBA RI	Sanctuary	Watercolour	21 x 30	34 x 44	750
275	Chris Myers RBA RI	Starman	Watercolour	15 x 30	33 x 48	750
276	Elizabeth Nast	Bag Lady	Acrylic	32 x 22	34 x 24	645
277	Elizabeth Nast	Charcoal Kebab 49	Acrylic	25 x 21	27 x 23	565
278	Peter Newsome FRSS RBA	Corner Stone	Carrara Marble	48 x 40 x 23		1,200
279	Peter Newsome FRSS RBA	Harbour Side	Oil	30 x 25	36 x 31	420
280	Peter Newsome FRSS RBA	Natures Path	Mixed Media	35 x 35	41 x 41	490
281	Peter Newsome FRSS RBA	Violin Movement	Glass	70 x 28 x 20		4,800
282	Peter Newsome FRSS RBA	Waterlilly Pool	Oil	28 x 36	32 x 40	420
283	Luna North	Primrose and Bee	Acrylic	39 x 49	45 x 55	500
284	Vicky Oldfield RBA	Bottles, Books and Flowers	Collagraph	69 x 50	93 x 70	695
285	Vicky Oldfield RBA	Bowl of Lilies	Collagraph	39 x 50	62 x 71	525
286	Vicky Oldfield RBA	Lockdown Spring	Collagraph	26 x 60	50 x 84	525
287	Vicky Oldfield RBA	Sunkissed	Collagraph	60 x 90	84 x 114	795
288	Vicky Oldfield RBA	Tulip	Collagraph	18 x 12	37 x 29	220
289	Lesley O'Neill	Oh Nanna Where Art Thou?	Collagraph	44 x 32	54 x 40	345
290	Steven Outram RBA	Be The One	Oil	28 x 30	38 x 41	1,900
291	Steven Outram RBA	Far Out	Oil	81 x 76	97 x 92	7,000
292	Steven Outram RBA	Summer Giant	Oil	76 x 91	94 x 109	8,000
293	Steven Outram RBA	To Be Free	Oil	52 x 62	67 x 77	4,250
294	Steven Outram RBA	Where To?	Oil	76 x 81	92 x 97	7,000
295	Samuel Owusu Achiaw	Mort de la Mer No. 2	Charcoal, Graphite & Carbon	50 x 65	75 x 90	3,200
296	Ginny Page	Come Together	Oil	28 x 50	36 x 58	4,000
297	Shanti Panchal Hon RBA	Mother and Child	Watercolour	38 x 28	58 x 47	4,500
298	Shanti Panchal Hon RBA	The Balcony	Watercolour	39 x 29	58 x 47	4,300
299	Lynda Payne	End of the Garden, Evening	Oil	23 x 23	37 x 37	480
300	John Pearson	Hedge Ridge Towards Saxthorpe	Charcoal	46 x 88	68 x 112	700
301	Susie Perring RBA	Dappled Light	Aquatint Etching	20 x 20	46 x 46	285
302	Susie Perring RBA	Lilies	Aquatint Etching	25 x 25	46 x 46	330
303	Susie Perring RBA	Magnolia	Aquatint Etching	50 x 50	78 x 78	410
304	Susie Perring RBA	Standing Horse, Left	Watercolour		27 x 22	529
305	Susie Perring RBA	The Crackle Glaze Pot	Aquatint Etching	50 x 50	78 x 78	410
306	Tessa Peskett	Amur	Acrylic	80 x 80	90 x 90	1,250
307	Tessa Peskett	Perdu	Ink & Mixed Media	35 x 45	50 x 65	550

Name	Title	Medium	Size (cm)	Framed	£	
308	Tessa Peskett	Red-Legged Honey Creeper	Acrylic	40 x 40		750
309	Melvyn Petterson RBA NEAC	Cottage amongst the trees	Oil	30 x 50	48 x 68	1,100
310	Melvyn Petterson RBA NEAC	Near Cleethorpes Beach	Oil	34 x 45	52 x 63	1,500
311	Melvyn Petterson RBA NEAC	Near Humberston Fitties	Oil	44 x 59	62 x 77	2,250
312	Jon Pryke RBA	Approaching Rain, Suffolk	Pastel		70 x 65	980
313	Jon Pryke RBA	Changing Light, Costa Nova	Pastel		65 x 70	980
314	Jon Pryke RBA	Moon Bale	Pastel		29 x 32	400
315	Jon Pryke RBA	Shingle Street, Suffolk	Pastel		65 x 70	980
316	Jon Pryke RBA	Sun Bale	Pastel		54 x 53	950
317	Lynn Purcell	Fired Breakfast	Glass	3 x 26 x 26		435
318	Katherine Rhodes	Landshaping	Linocut	62 x 64	64 x 62	450
319	Barbara Richardson RBA	Still Life With Model of a Cat from Paris	Oil	17 x 18	32 x 33	850
320	Sue Roe	A Place to Reflect	Collagraph	22 x 22	32 x 32	220
321	Sue Roe	Persimmon Tree	Monoprint & Collagraph	22 x 22	32 x 32	220
322	Sonia Rollo	A Louche Moose	Etching	50 x 31	64 x 46	410
323	Sonia Rollo	Here's Lulu	Etching	31 x 50	46 x 64	410
324	Nicki Rolls	Wild strawberry	Charcoal	86 x 86	90 x 90	800
325	Alan Rossiter	The Garden of Unearthly Delights	Acrylic	90 x 150		7,200
326	Elliot Roworth	Hazy Sunlight, Brighton	Oil	61 x 31	71 x 41	695
327	Elliot Roworth	St Paul's Church in Soft Light, Brighton	Oil	61 x 31	71 x 41	695
328	Zuzanna Salamon	I Will Close My Eyes And Admit That This Is The End	Charcoal	76 x 56	82 x 62	1,700
329	Andrea Santi	Aurora	Graphite	15 x 10	15 x 10	700
330	David Sawyer RBA	'Memorium'	Oil	28 x 50	40 x 62	1,800
331	David Sawyer RBA	'The Prince of Egypt'	Oil	46 x 51	60 x 65	3,000
332	David Sawyer RBA	Gerrard Street	Oil	41 x 15	51 x 25	900
333	David Sawyer RBA	Mitcham Lane, February 2021	Oil	25 x 51	37 x 63	1,100
334	David Sawyer RBA	The Red Bridge, West Norwood	Oil	21 x 45	31 x 55	1,000
335	John Scott Martin PRSMA	Darkening Sky	Mixed media	37 x 37	50 x 50	525
336	John Scott Martin PRSMA	Homewards after the shift	Mixed media	22 x 32	36 x 46	375
337	David Scott Moore	Birches Under a Cerulean Sky	Oil	46 x 46	60 x 60	1,400
338	Melissa Scott-Miller RBA NEAC RP	A cherry tree in Mayfair	Oil	50 x 50		1,500
339	Melissa Scott-Miller RBA NEAC RP	New beginnings in Islington	Oil	120 x 100		5,500
340	Melissa Scott-Miller RBA NEAC RP	Night view at Russell Square tube	Oil	60 x 60		2,000
341	Melissa Scott-Miller RBA NEAC RP	Nighttime view in Great Russell Street	Oil	80 x 80		3,000
342	Daniel Roy Sharples	The Junction	Oil on linen	30 x 40	47 x 57	1,295
343	Geoff Shillito	Barry Discovers The Chocolate Fudge Sundae	Oil on Linen	90 x 90	90 x 90	5,000
344	Lyudmila Sikhosana	Serene	Oil		40 x 50	1,250
345	Carolyn Simpson ARSMA	Rooster At Rest	Soapstone	30 x 23 x 15		1,200

Name	Title	Medium	Size (cm)	Framed	£
346	Jayson Singh	Oil	120 x 100		3,200
347	Nicola Slattery RBA	Acrylic on wood	30 x 30	43 x 43	2,500
348	Nicola Slattery RBA	Drypoint Print	43 x 39	56 x 54	445
349	Nicola Slattery RBA	Acrylic on wood	40 x 40	56 x 56	3,500
350	Nicola Slattery RBA	Drypoint Print	39 x 48	54 x 65	495
351	Nicola Slattery RBA	Collagrap <sup>®</sup>	43 x 39	56 x 54	445
352	Michael Sofroniou	Oil	30 x 26	42 x 38	900
353	Richard Sorrell Sen RBA NEAC PPRWS	Acrylic	20 x 14	27 x 20	750
354	Richard Sorrell Sen RBA NEAC PPRWS	Oil	45 x 59	51 x 64	1,500
355	Richard Sorrell Sen RBA NEAC PPRWS	Oil	61 x 45	74 x 59	1,700
356	Richard Sorrell Sen RBA NEAC PPRWS	Acrylic	25 x 32	31 x 38	800
357	Richard Sorrell Sen RBA NEAC PPRWS	Oil	33 x 42	45 x 54	1,300
358	Renata Sosinska	Print	30 x 60	40 x 70	420
359	Sarah Spackman RBA AROI	Oil	20 x 25	32 x 37	895
360	Sarah Spackman RBA AROI	Oil	20 x 25	32 x 37	895
361	Sarah Spackman RBA AROI	Oil	20 x 20	32 x 32	850
362	Sarah Spackman RBA AROI	Oil	25 x 20	37 x 32	895
363	Laurence Sparey (1939-2021)	Perspex	53 x 63	60 x 69	NFS
364	Laurence Sparey (1939-2021)	Aluminium & Acrylic	60 x 70	63 x 72	5,000
365	David Sprakes RBA	Bronze	31 x 16 x 16		2,000
366	David Sprakes RBA	Bronze	28 x 24 x 17		1,900
367	David Sprakes RBA	Steel	38 x 20 x 20		1,500
368	John Sprakes RBA ROI	Mixed Media	46 x 62	58 x 74	850
369	John Sprakes RBA ROI	Mixed Media	40 x 50	50 x 60	850
370	John Sprakes RBA ROI	Mixed Media	37 x 39	57 x 56	500
371	Callum Stannard RBA	Wax	39 x 13 x 15		700
372	Callum Stannard RBA	Wax	28 x 29 x 20		700
373	Callum Stannard RBA	Wax	28 x 28 x 20		700
374	Felicity Starr	Oil	18 x 13	30 x 24	400
375	Felicity Starr	Oil	18 x 13	30 x 24	400
376	Wei Sun	Woodcut	50 x 70	60 x 80	259
377	Jacqueline Taber RBA	Oil	31 x 41	38 x 48	875
378	Jacqueline Taber RBA	Oil	23 x 64	30 x 71	995
379	Will Taylor RBA	Etching	10 x 15	39 x 45	325
380	Will Taylor RBA	Etching	15 x 10	46 x 38	325
381	Will Taylor RBA	Etching	15 x 10	46 x 38	325
382	Will Taylor RBA	Etching	25 x 20	55 x 48	395
383	Malcolm Taylor RBA PS	Mixed Media	30 x 30	45 x 45	1,250
384	Malcolm Taylor RBA PS	Mixed Media	40 x 40	52 x 52	1,350

Name	Title	Medium	Size (cm)	Framed	£
385	Malcolm Taylor RBA PS	Mixed Media	45 x 45	60 x 60	1,450
386	Malcolm Taylor RBA PS	Mixed Media	49 x 49	52 x 52	1,650
387	Malcolm Taylor RBA PS	Collage	21 x 21	52 x 52	750
388	Nick Tidnam PPRBA NEAC	Acrylic		28.5 x 28.5	600
389	Nick Tidnam PPRBA NEAC	Acrylic		27.5 x 32.5	650
390	Nick Tidnam PPRBA NEAC	Acrylic		27.5 x 33	600
391	Nick Tidnam PPRBA NEAC	Acrylic		23 x 23	550
392	Sian Tillott	Graphite & Charcoal on Paper	56 x 76	66 x 86	1,400
393	Frank To	Wooden Panel	40 x 40 x 7		1,150
394	Delia Tournay-Godfrey	Oil	18 x 26	26 x 34	750
395	Colin Twinn	Oil	24 x 30	34 x 40	600
396	Amit Vadher	Oil on tile	90 x 30		6,000
397	Veronica Valeri	Oil	61 x 91		2,350
398	Veronica Valeri	Oil	61 x 91		2,350
399	Kirsten van Schreven	Drypoint Etching	24 x 33	44 x 53	395
400	Kirsten van Schreven	Drypoint Etching	28 x 14	48 x 34	425
401	Kirsten van Schreven	Drypoint Etching	31 x 15	50 x 35	455
402	Lee-Anne Van Wyk	Watercolour & Pencil	60 x 45	80 x 60	1,100
403	Lee-Anne Van Wyk	Watercolour & Pencil	60 x 45	80 x 60	1,100
404	Nicholas Verrall RBA ROI	Oil	36 x 50	50 x 64	3,750
405	Nicholas Verrall RBA ROI	Oil	50 x 60	64 x 74	5,250
406	Nicholas Verrall RBA ROI	Oil	28 x 39	40 x 51	2,500
407	Nicholas Verrall RBA ROI	Oil	99 x 79	118 x 99	8,700
408	Rowan Vuglar	Acrylic	70 x 50	75 x 55	950
409	Laurel Wade	Oil	30 x 41		594
410	Chunting Wang	Watercolour	44 x 34		800
411	Chunting Wang	Watercolour	36 x 45		800
412	Terry Watts RBA	Acrylic	45 x 64	68 x 87	1,800
413	Terry Watts RBA	Acrylic	45 x 64	68 x 87	1,800
414	Terry Watts RBA	Acrylic	45 x 64	68 x 87	1,800
415	Terry Watts RBA	Acrylic	45 x 64	68 x 87	1,800
416	Peter Weaver (1927-2021)	Mixed Media	55.5 x 41.7 x 41.7		4,500
417	Peter Weaver (1927-2021)	Mixed Media	71.3 x 36.5 x 36.5		4,500
418	Robert E Wells RBA NEAC	Oil	14 x 20	29 x 35	950
419	Robert E Wells RBA NEAC	Oil	15 x 15	20 x 20	795
420	Robert E Wells RBA NEAC	Oil	27 x 27	41 x 41	1,150
421	Robert E Wells RBA NEAC	Oil	16 x 36	26 x 45	1,150
422	Robert E Wells RBA NEAC	Oil	34 x 45	46 x 56	2,200
423	Stefan Whiting	Oil	20 x 20	30 x 30	300



Name	Title	Medium	Size (cm)	Framed	£	
424	Annie Williams RBA RE RWS	Bamboo II	Watercolour	40 x 50	59 x 67	650
425	Annie Williams RBA RE RWS	Late Hellebores	Watercolour	27 x 37	46 x 56	600
426	Annie Williams RBA RE RWS	Longing For Summer	Watercolour	40 x 50	59 x 67	900
427	Annie Williams RBA RE RWS	Purple Honeysuckle	Watercolour	27 x 37	46 x 56	600
428	Annie Williams RBA RE RWS	Three Cherries	Etching & Wash	15 x 18	37 x 37	200
429	Steven Wood	Floating	Oil	180 x 115 x 9	185 x 118 x 15	11,000
430	Alex Wood	The Windswept Palm	Bronze	25 x 15 x 13		9,800
431	Tim Woodcock-Jones	Ashridge	Oil	40 x 30	42 x 32	800
432	Tim Woodcock-Jones	Ivinghoe Beacon	Oil	30 x 40	32 x 42	800
433	Hannah Woodman	Snowy Road, Cornwall	Watercolour & Gouache	33 x 37	52 x 57	1,550
434	Anne Wright RBA	Little Square, Mdina, Malta	Oil	19 x 24	31 x 37	600
435	Anne Wright RBA	Old Doorway, Syria	Oil	46 x 29	53 x 47	850
436	Anne Wright RBA	Pyrgos, Santorini	Oil	21.5 x 16	36 x 30	600
437	Anne Wright RBA	Tai-O, Hong Kong	Oil	31 x 28	48 x 45	650
438	Anne Wright RBA	View of Barga, Tuscany	Oil	40 x 50	56 x 68	1,250
439	Yuxin Yang	As the River Wound, Twenty Miles of the Sea	Oil	15 x 20	23 x 28	750
440	Yuxin Yang	Where Smooth Waters Glide	Oil	10 x 10	18 x 18	350
441	Anthony Yates RBA RBSA	Angels Assuming Hutan Farm Stepping Out Wearing Platform Shoes to Feel as Though They are Still Floating	Collagraph	41 x 25	70 x 51	550
442	Anthony Yates RBA RBSA	Girl with Struggling Cat	Oil	115 x 51	119 x 55	3,250
443	Anthony Yates RBA RBSA	Sham-maz-nequin	Oil	61 x 48	70 x 57	1,850
444	Anthony Yates RBA RBSA	Stantibus Homini	Etching	14 x 8	35 x 27	185
445	Anthony Yates RBA RBSA	Zig-zag	Oil	81 x 122	95 x 126	5,500
446	Gertie Young	Between the Showers	Gouache	29 x 29	39 x 39	350
447	Gertie Young	Probably Snoring	Gouache & Collage	25 x 30	35 x 40	350
448	Gertie Young	Tea Cakes to the Rescue	Gouache, Collage & Sweet papers	30 x 30	40 x 40	450
449	Tom Zaw	leg Down	Pyrography	35 x 50		2,880
450	Huaicun Zhang Hon RBA	Chicks' Amusement	Chinese Ink		82 x 122	2,000
451	Huaicun Zhang Hon RBA	The Spring	Chinese Ink		95 x 100	2,000
452	Brendan Neiland (Invited Artist)	Arcadia	Acrylic	120 x 180		20,000
453	Brendan Neiland (Invited Artist)	Pendulum	Acrylic	120 x 180		20,000

## Acknowledgements

### Patron

Wei Shao FRBA

### Officers

**President:** Mick Davies PRBA Hon RBSA  
**Vice President:** Meg Dutton VPRBA PVPRE  
**Hon. Secretary:** Brenda Davies  
**Hon. Treasurer:** Francis Drasar FCA  
**Membership Secretary:** Austin Cole

### Council

Susie Perring  
 Guy Portelli  
 Callum Stannard  
 Anthony Yates  
 Terry Watts

### Non-Voting Co-Opted Members

Henry Jabbour  
 Will Taylor

### Directors and Custodian Trustees

Mick Davies PRBA  
 Meg Dutton VPRBA  
 Nick Tidnam PPRBA

### Society Trustees

Terry Watts  
 Nick Tidnam

### Other Appointments

**Keeper:** Julian Halsby

### Fellows

Wei Shao, RBA Patron  
 Hidetoshi Kushida, CEO Qualiart  
 Anthony Lester Hon RMS FRSA  
 Liam Culver  
 John Culver  
 Michael Harding  
 Roger Austin  
 Philip Harris

Betty Lutyens-Humfrey  
 Dominic Chapman  
 John Horn  
 Peter London  
 Carol Donovan BA (Hons) MA  
 Rosemary Parkes  
 Michael Fairclough BA (Hons) PGCE  
 Malcolm Plastow  
 Colin Gardner BSc (Hons)  
 Dr Michael Thrower BSc Hon FIMgt FRSA  
 Rod Watts

Special thanks to Anthony J Lester FRBA Hon RMS FRSA for his year-round assistance with responding to enquiries from the public.

Special thanks also to Liam Culver FRBA for his sterling work on our website.

Special thanks also to Cheryl Culver for her assistance with the RBA website and John Culver for printing and producing our Christmas cards and Prize Certificates.

Our special thanks for their additional sponsorship to:



Mr Wei Shao FRBA, our Patron



Mr Kushida, CEO of QUALIART



The Royal Over-Sea League,  
 London  
[www.rosl.org.uk](http://www.rosl.org.uk)



The Arts Society  
[www.theartsociety.org](http://www.theartsociety.org)

## Honorary Guest Members 2022 – 2023

The Royal Society of British Artists has established cultural links with QUALIART, a society of artists from Japan who tour exhibitions of their work to different countries promoting the culture and quality of Japanese contemporary art. We are delighted to have them as Honorary Guest Members of the Society and look forward to developing our association.

Sono Aoki  
Ryo Aonuma  
Kashu Ando  
Hatsue Inoue  
Masumi Inoue  
Rengetsu Ono (Naomi)  
Eiko Kanba  
Teisetsu Koyama  
Keiya Sugimoto  
Fuyo Takahashi  
Shigeo Nakajima  
Hojun Nishishita  
Etsuko Horiuchi  
Yoshiko Matsumoto  
Shuetsu Morii  
Toshiko Yasui  
AWJED a.k.a.  
Miyuki Someya  
Mariko Aoe  
Aki  
Yuumi Asatsu  
Azur Yumiko  
ATSUKO  
atelier Agapanthus  
Yamazaki Kiyoko  
Atelier ilsogno natsumi  
Chieko Igarashi  
Naoya Iguchi  
Kouei Ishikawa  
Shizu Ishikawa  
Chizu Ishida  
Midori Imai  
Keiko Ueda  
Kagetsu Ukyo  
Energy artist Reiko  
(Reiko Hara)  
Kiyoko Ota  
Reiko Okamoto  
Sachiko Okutsu

Yuko Kaise  
Chieko Catou  
Yuji Kato  
KADOZARU  
Nao Kanae  
Akiko Kawabata  
Mika Kawabata  
Mina Kikuchi  
Momo Kito  
KOKO  
Kayo Kusuda  
Koryu  
Yoshiba Goto  
Noriko Kobayashi  
Tomoji Saeki  
Mineo Sakata  
SAKURAKO  
Sakurakoyuki  
Fumi Sasamori  
Sachiko & Kuncit  
sacco  
Keiko Sato  
Koki Sato  
Satonegi  
Ayawo Shiratori  
Yoshiko Shinzawa  
Chizu Suzuki  
Mina Sumida  
Sadako Takada  
Nobuko Takahashi  
Michiko Takamizawa  
Yuko Tada  
tatsuya  
Kimiko Taniguchi  
Mashiro Tanishi  
Chihiro  
Kyoko Tsuchiya  
Hiroko Dekio  
Kunihiko Nakashima

Kyoko Nakata  
Kayo Nakamura  
Tomoya Nakamura  
Reiko Nakamura  
Hiroshi Nagoya  
NISHI  
Jun Nishizaki  
Sayuri Hasegawa  
Sumie Hasegawa  
Miyuki Hasekura  
Hanaco Yoshimi  
Healing CHALK ART  
Takako's PINU  
Takako Kawaguchi  
Mitsuko Hirano  
Yuki Fukushima  
Ryoko Fukuda  
FleurbrahmanArt  
poporo  
Mart. 6  
Mitsunori Makino  
MakiRyu  
Magnolia  
Masayo Masuda  
Yashiro Matsuo  
Marina Nishide  
Mine  
Marushiki  
Sadao Miura  
Junko Miyazaki  
Mie Miyashita  
Yui Mukai  
Momiji  
Yoko Morioka  
Mayumi Yasunaga  
Chizuko Yamaguchi  
Fumiko Yamashita  
Shori Yamane  
Yuuki

Mariko Yuzawa  
Masaoki Yoshihara  
Lariart Mamoru Matsui  
RIE La ∞ COSMIC LIGHT ART  
Emi Rokujo  
Madoka Wakasa  
Aumu  
Shiki Aoki  
Ritsuko Aoki  
Yuko Akiya  
Tsubasa Asahina  
izumoiro Chieko Nozu  
Toshi Ida  
Nobue Ito  
Keiko Uenami  
Chiyomi Ujii  
Miwa Utsunomiya  
Akemi Umehara  
Keiko Umemura  
Enishi Flower Akina Hyakutake  
Naomi Okura  
Yasuko Otsuka  
Michiko Omiya  
Katsuyo Ono  
Miyoko Kakizawa  
Miyoko Kanazawa  
Toshiko Kanamitsu  
kafca  
Yukari Kaho  
Mizuyo Kamizono  
Kayoko  
Momoe Kawazoe  
Chikako Kawabata  
kuu yukio  
Kimiyo Kunikata  
Shino Kubodera  
K.PePe  
Masako Goto  
Etsuko Kobayashi

Namie Kobayashi  
Naoka Saeki  
Hisae Sakuma  
Tamie Sasaki  
Mieko Sato  
Yukiko Sato  
Misako Sawatari  
Yasuko Shiizu  
Mariko Shimada  
Jusho  
Junko Shiraiishi  
Yoko Shirakawa  
Shihori Suzuki  
Hitomi Suzuki  
Yoshie Senda  
TAKAO★ART★SHOP Chiyo  
Chie Takaoka  
Hiroko Takagi  
Kazuko Takahashi  
Tamae Tanji  
Noriko Tsuchimura  
Nobuko Tokai  
Yoko Nagai  
Ayako Nakau  
Yasuyo Nishimura  
Nul (Kumiko Abe)  
Noriko Nunokawa  
Miyuki Nemoto  
Noriko Noguchi  
Kyoko Nozawa  
Ayano Nohara  
Fumie Hata  
Tomomi Hanada  
Dai Higuchi  
Yoko Hidaka  
Yuko Hirasaka  
(Atelier Natural Flower)  
Muneko Hirate  
Hiro

Fusami Furukawa  
Kazuko Furuyama  
miya  
Myu  
Junko Murakami  
Meiryu  
Merry Candle  
morie's :)  
Hiromi Yagi  
Yoko Yamaguchi  
Makiko Yui  
\*Yuka\*(Yuka Kitou)  
yuriCo  
Ayako Yoshino  
Iima Toshimi Minami  
Len  
Chihoru Wada  
Hisashi Tobikata  
Toshiyasu Towatari  
Masayoshi Hagihara  
Hiromichi Mori  
Hojyu Watari  
Reishun Iisaka  
Rishun Ishii  
Myoho Isomichi  
Kaori Iwatsuki  
Satoshi Katayama  
Keigetsu Kawahara  
Kogyoku  
Kazumine Goda  
Shikou  
Meiyu Niwa  
HIRO (shodou salon FREEDA)  
Kagyoku Fujisawa  
Jyusui Mukumoto  
Masumi Yoshinaga

## AGBI

**Patron:** HRH The Prince of Wales

**President:** Nicola Hicks MBE

For over 200 years the Artists' General Benevolent Institution has provided assistance to professional artists and their dependants in times of need. Funds are urgently needed for the continuation of this work.

Office of the Institution: Burlington House, Piccadilly W1J 0BB  
www.agbi.co.uk  
Telephone 020 7734 1193  
Registered Charity No. 212667